



CONVENTIONS & MEETINGS DIVISION

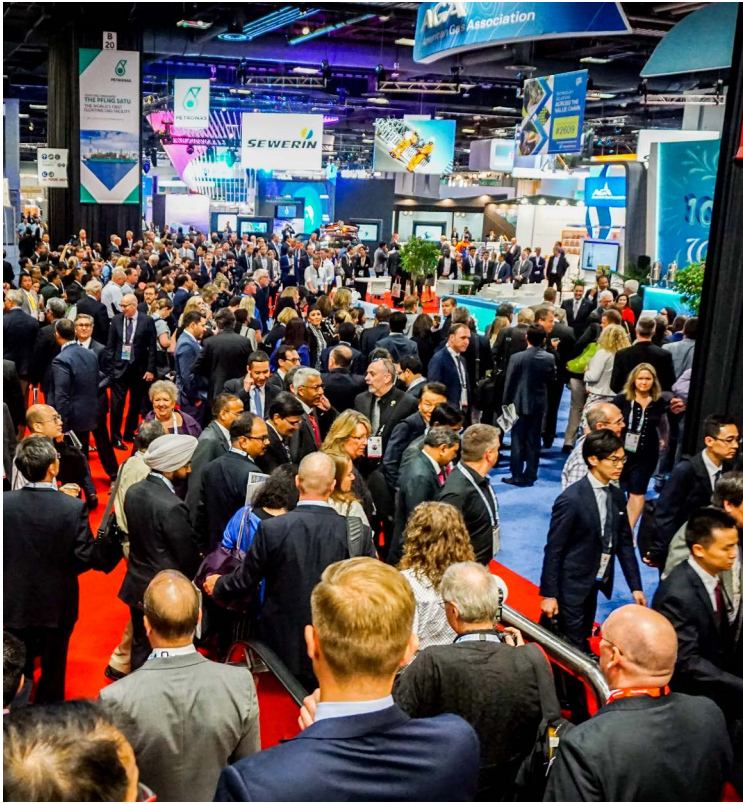


WE CREATE AMAZING

Events DC is the face of conventions, sports, entertainment, and cultural events in our nation's capital.

Driven by a passion for creating and delivering experiences that engage, excite and entertain, we strive to turn every event, meeting or convention into an opportunity for amazing.

With a diverse range of awe-inspiring spaces and events that embody the cosmopolitan feel of Washington, DC, we offer event planners and attendees alike not just events, but unforgettable experiences.



WE HOST IT ALL

Conventions, sports, entertainment and cultural events - all within the nation's capital.

In a premier destination filled with cultural, culinary and artistic delights, every event has the potential to become history-in-the-making. As the official convention and sports authority for the District of Columbia, Events DC rises to the challenge by taking bold steps to leverage the astonishing beauty, history and diversity in the nation's capital. Under the umbrella of a unified organization, Events DC offers visitors and residents a seamless experience and an extensive array of options for events of all kinds. Events DC is a one-stop solution in Washington, DC for preeminent venues and event services including:

- State-of-the-art and historic venues and unique spaces
- Nearby first-class hotels and dining options
- Access to diverse neighborhoods with one-of-a-kind attractions
- Sustainable and innovative practices
- Dynamic and dedicated team of event professionals
- Robust network of business and community partners

Keeping our finger on the pulse of conventions, entertainment, sporting and cultural events, Events DC reflects three distinct lines of business.



Each distinct division reinforces the ability to attract unique partnerships and unforgettable events – while driving greater economic and community benefits for Washington, DC.

These divisions deliver outstanding value and service for our clients and continue to position Events DC on a global stage.

OUR VENUES



Walter E. Washington Convention Center



Carnegie Library at Mt. Vernon Square



Robert F. Kennedy Memorial Stadium



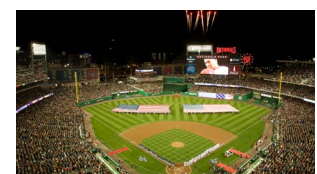
DC Armory



RFK Stadium Festival Grounds



Maloof Skate Park at RFK Stadium



Nationals Park



OUR BRAND PROMISE



PRINCIPLES FOR SUCCESS

- ★ **RESPECT**
Value the relationships of our customers and colleagues
- ★ **PROFESSIONALISM**
Hold ourselves to the highest standards of performance
- ★ **COMMUNICATION**
Encourage and foster productive interactive dialogue
- ★ **TEAMWORK**
Showcase shared knowledge, skills, and abilities to achieve customer satisfaction
- ★ **ACCOUNTABILITY**
Ownership and responsibility for our commitments

Strive for 5 is an internal and external customer service program that provides us with the opportunity to continually raise the bar of service delivered and redefine event experiences for our attendees and clients.

1

WE MAKE IT SEAMLESS

Planning a successful event means that you're always managing multiple parties and tasks. Complexity is part of the game. At Events DC, we have designed a process to make your planning seamless. From our initial discussion and needs assessment meeting to our service delivery, we work to ensure that the process is as smooth as possible for you.

2

WE DELIVER CUSTOMIZED SERVICE

At Events DC, we have experience delivering events for many of the most dynamic clients in the world. That experience, combined with the knowledge of some of the industry's top professionals and a unique five-star service delivery program called Strive for 5, allow Events DC to deliver unparalleled service.

3

WE CREATE AND INSPIRE

While conversations around events often revolve around location, venues and services, we believe in focusing on opportunities to delight and inspire. By taking the time to focus on the details for our clients and attendees, we help ensure that everyone has an experience worth raving about.

6

TOWARDS A BETTER FUTURE

IMPROVING THE ENVIRONMENT THROUGH SUSTAINABLE EVENTS

The Walter E. Washington Convention Center has become one of a growing number of large convention facilities across the U.S. to “go green.” In addition to sustainable procedures implemented like the usage of biodegradable cups made from corn products, the facility has gone the extra mile and added sustainable recycling programs, environmentally-friendly cleaning products and energy-saving initiatives.



INNOVATION THAT TRANSFORMS

Technology has continued to transform how we do business at our venues. Events DC has implemented several technological enhancements to improve the experience for visitors, event planners and clients at the Walter E. Washington Convention Center.

- Customizable mobile app for the Walter E. Washington Convention Center
- More than 200 high-definition LED displays
- High-speed Wi-Fi in public areas
- Remote event connectivity via EventPath
- Interactive digital charging kiosks
- Real-time social media streaming capabilities
- Forward-thinking wireless capacity and infrastructure

COMMITTED TO OUR COMMUNITY

From the annual Safeway Feast of Sharing that provides more than 5,000 meals to District residents in need to our partnership with the DC Commission on the Arts and Humanities to reenergize DC storefronts, we are committed to the success of DC as a whole.



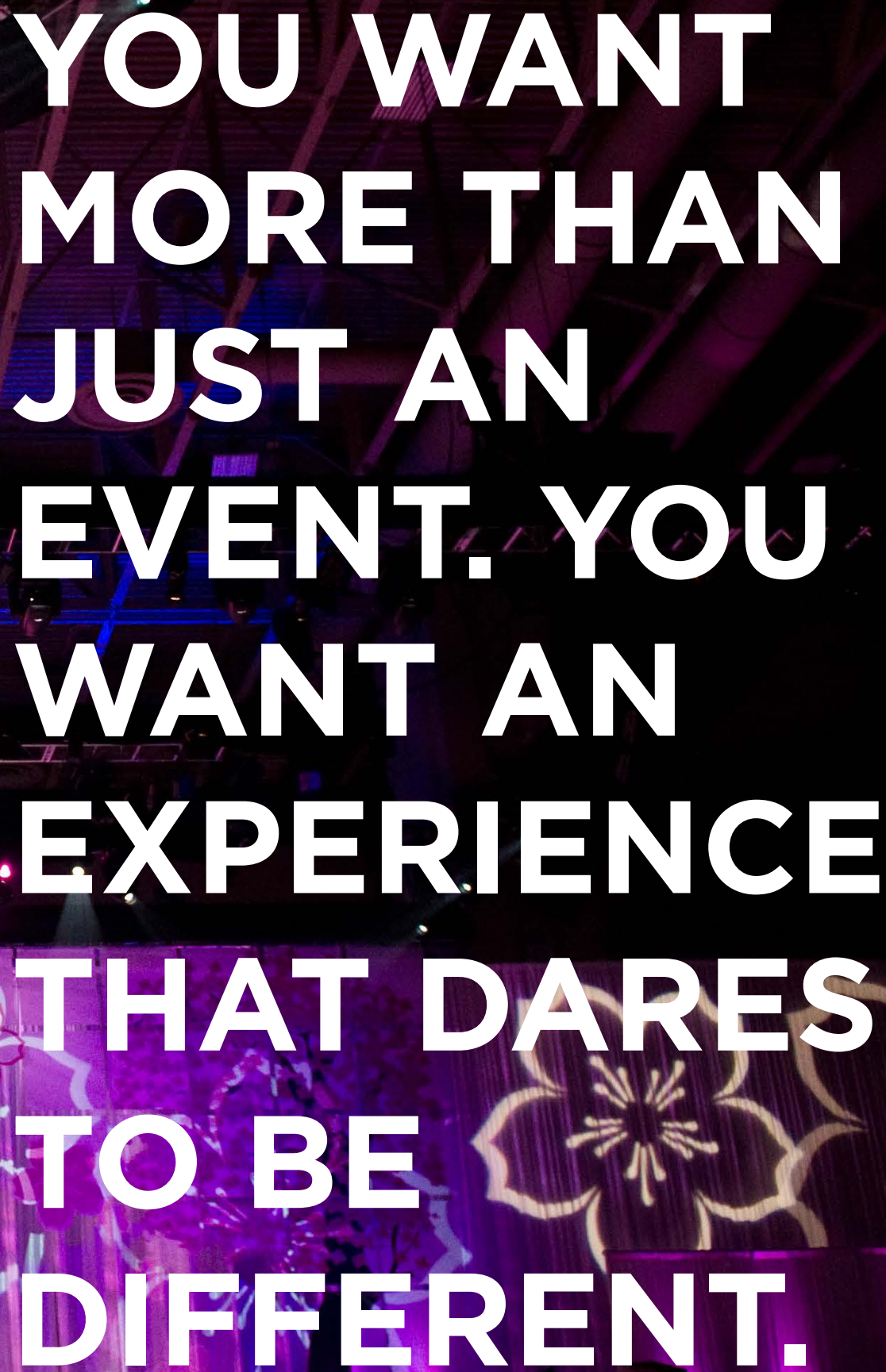
STRATEGIC PARTNERS

As a committed member of the community, Events DC is uniquely positioned to tap into new opportunities and connect our clients with one of the strongest networks in the region.





National Cherry Blossom Festival Centennial Celebration

A large indoor event space, possibly a convention hall or arena, with a stage and audience. The stage is lit with purple and blue lights, and there are large floral patterns projected onto the backdrop. The audience is visible in the foreground, looking towards the stage. The text is overlaid on the image in a large, white, sans-serif font.

**YOU WANT
MORE THAN
JUST AN
EVENT. YOU
WANT AN
EXPERIENCE
THAT DARES
TO BE
DIFFERENT.**



57th Presidential Inaugural Ball, Walter E. Washington Convention Center

CONVENTIONS & MEETINGS

With a diverse range of unique and awe-inspiring spaces that complement a renewed cosmopolitan flair, there's no better place to hold a meeting than Washington, DC.

And the Conventions and Meetings Division of Events DC is where we make amazing events happen.

From our record-breaking and environmentally innovative Walter E. Washington Convention Center to the simple elegance and modern amenities of the Carnegie Library at Mt. Vernon Square, Events DC can provide mixed-use venues that can accommodate and delight crowds of any size.



Nuclear Security Summit at Walter E. Washington Convention Center

WALTER E. WASHINGTON CONVENTION CENTER BY THE NUMBERS

2.3M Total sq. ft.

703,000 Sq. ft. of Exhibit Space

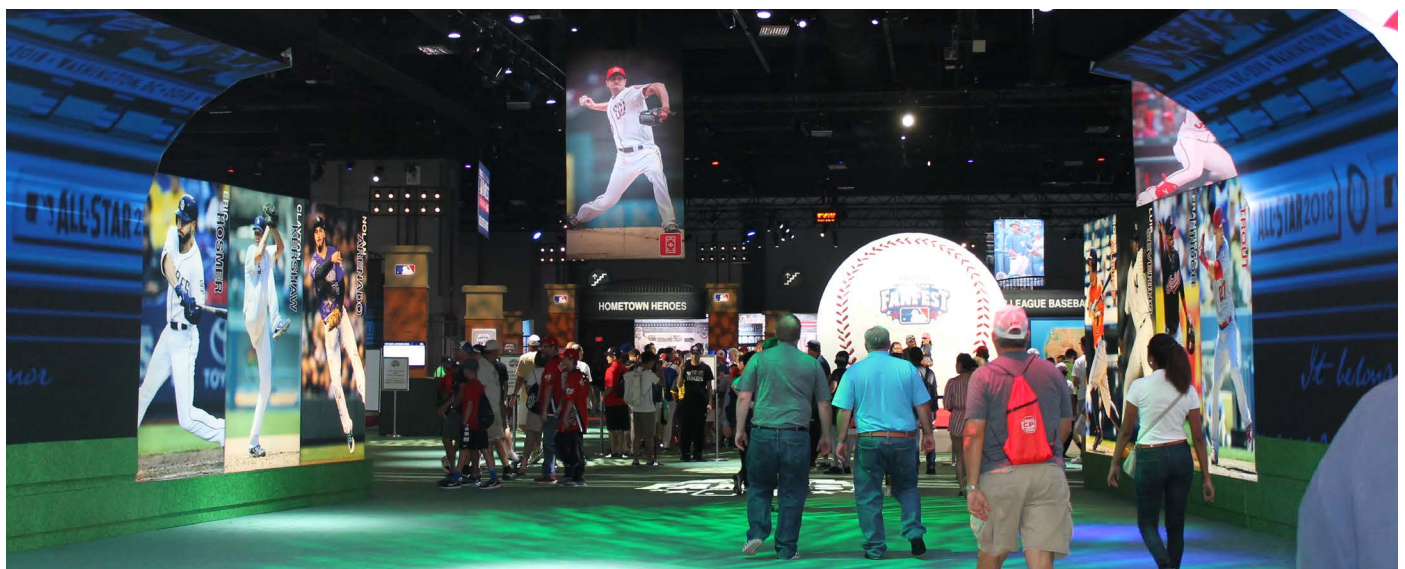
5 Exhibit Halls

52,000 Sq. ft. Ballroom Space

77 Meeting Rooms

50 Loading Docks

METRO Accessible



Major League Baseball (MLB) Fan Fest at the Walter E. Washington Convention Center

EVERY SIZE EVENT IMAGIN- ABLE

The Walter E. Washington Convention Center brings a new level of energy to events in the city and is designed to be the venue of success for large conventions, trade shows, and meetings of all sizes. Major medical shows take advantage of cutting-edge technology, while the region's largest consumer events value welcoming interior space and easy access to public transit. The Convention Center also hosts some of Washington, DC's most exclusive galas and lavish fundraisers.



Pokemon World Championship



American College of Cardiology



NatsFest



Delta Sigma Theta Centennial



Capitol Hill Volleyball Classic

OUR PARTNERS IN EXCELLENCE

Events DC has teamed up with industry leaders to provide the best services and conveniences for our clients. The Walter E. Washington Convention Center works exclusively with the following service partners.



Food & Beverage

Aramark

www.aramark.com

(202) 249-3500

Email: wewccexhibitors@aramark.com

Aramark, united by a passion to serve, has 270,000 team members who deliver experiences that enrich and nourish the lives of millions of people in 19 countries around the world, every day. They make sure every aspect of the guest experience is exceptional by providing unforgettable food and beverage services for planners, attendees and exhibitors.

Their approach is simple:

- Create craft chef-inspired menus with high-quality ingredients
- Encourage healthy, nutritious options
- Provide personalized experiences through exceptional service

Facilities Services

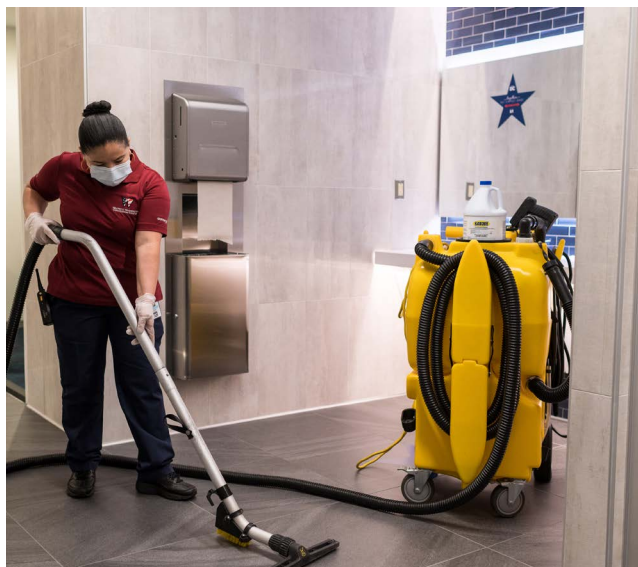
Aramark

www.aramark.com

(202) 249-3984

Email: donoso-ivan@aramark.com

The Walter E. Washington Convention Center is the exclusive provider of all facility cleaning services, including meeting rooms, ballroom, exhibit halls and common space. Services include vacuuming, porter services and mopping. Show management is responsible for cleaning, during move-in and move-out of all events. Certain cleaning services are complimentary, however additional services can be customized to fit your event's specific needs.





Digital Communications Digital Conventions

www.digitalconventions.com
(202) 249-3900

Digital Conventions is a leader in the areas of digital signage, space event communication and technical management. The team at Digital Conventions provides organizations with the tools and technology to deliver captivating informative content, powerful marketing, real-time event updates, and opportunities for event sponsorship.



Rigging GLP, Inc.

www.glpproductions.com
(202) 249-3607

GLP, Inc. is the exclusive rigging service provider for the Walter E. Washington Convention Center. As the only LSD-BE/ETCP recognized theatrical rigging company in the Washington, DC area, their experienced team will handle all phases of any technical rigging planning. GLP's excellence in rigging and safety is part of their distinction. GLP maintains a vast inventory of chain motors and rigging supplies that is the largest in the region.



Internet & Telephone Smart City

www.smartcity.com
(202) 249-3800

Smart City is a leader in providing quality, advanced technology and telecommunication services to the trade show and event industry. Smart City provides clients with design, installation and maintenance of data, voice, electrical and utility platforms. Additionally, Smart City offers audio visual services, telephone and computer network engineering, security and monitoring. Each year, Smart City provides network services to more than 5,500 events.



Electric & Plumbing Hi-Tech Electric

hi-techelectric.com
(202) 249-3600

Hi-Tech Electric provides electrical contracting services for tradeshow, conventions and special events at the Walter E. Washington Convention Center. Serving both convention and event organizers and individual trade show exhibitors, Hi-Tech is committed to pre-event planning and project management to ensure maximum efficiency for clients, resulting in a favorable bottom line.



Food & Beverage Pepsi Cola, Inc.

www.pepsico.com
(202) 567-2950

Pepsi Beverages Company has an exclusive pouring rights partnership to provide all non-alcoholic beverage products at the Walter E. Washington Convention Center.



Audio & Visual Projection Presentation Technology*

www.projection.com
(202) 249-3700

Projection Presentation Technology is the in-house audiovisual solutions service partner at the Walter E. Washington Convention Center. Projection not only drives dynamic innovative ideas, but provides sustainable development solutions. Projection affords clients with leading edge innovation and best practices for audiovisual technology in the meetings, convention and special event space.

Business Services Convention Services Business Center*

The Business Center is located within the 1st floor lobby of the Walter E. Washington Convention Center. The Business Center offers copy and commercial printing services, as well as fast and efficient shipping and receiving services for clients.

* Not an exclusive service provider.

MAKING AN IMPACT

American Israel Public Affairs Committee (AIPAC) Policy Conference

The American Israel Public Affairs Committee (AIPAC) Policy Conference is the largest gathering of the pro-Israel movement. Each year, more than ten thousand participants come from all 50 states and outside the United States to partake in the conference.

In March 2012, President Obama and top Republican presidential candidates addressed 13,000 attendees at the AIPAC annual conference held at the Walter E. Washington Convention Center. The successful conference resulted in an economic impact of more than \$14 million as a result of hotel bookings, dining, shopping, visiting attractions and using local transportation.

A notable inclusion in the annual conference is the AIPAC Village, a diverse and vibrant space enabling attendees from the around the globe to meet, share and learn from each other. The AIPAC Village inhabits the lower floor (Halls A, B, C) of the Convention Center, covering two full city blocks. In addition to featuring some exhibits and lectures, the Village includes diverse and kosher food options, club lounges, a bookstore, Quickstop Kiosks, mobile newsstands and more.

Because international visitors typically stay in Washington, DC longer and spend more money, there is a continued push to establish Washington, DC as an international conventions and meetings destination.



A CLOSER LOOK



A CLOSER LOOK





A CAR LOVER'S DELIGHT

Washington Auto Show

Our longest running show, the Washington Auto Show, was founded in 1921 when the car industry was in its infancy. As cars grew in popularity, so too did the size and scope of the Auto Show. In its first year, 20 Washington, DC area dealers and distributors came together to promote the benefits of the horseless carriage. Nine decades later, the show displays 700 makes and models from 42 manufacturers and continues to draw huge crowds each year.

Today, the annual auto show has grown to require every available foot of display space, covering nearly eight acres. The show is the largest consumer show held in the Walter E. Washington Convention Center, as well as Washington, DC. It attracts more attendees, occupying all five exhibit halls and producing more revenue than all other consumer shows. It has evolved into the auto industry's national and policy show and now highlights safety, technological breakthroughs, and green solutions. Our customer, the Washington Area New Auto Dealers Association, produces the two weekend show, which regularly draws approximately 250,000 attendees annually, including consumers, members of Congress, government policy makers, automotive innovators and industry leaders.

“The Washington Auto Show was the first event in each of the last two convention centers in Washington, DC,” said John O’Donnell, President & CEO, Washington Area New Automobile Dealers Association (WANADA). “Just as each convention center has improved, so has our show. The nation’s capital has undergone a rejuvenation, with new buildings, new residential growth, new restaurants, improved sports facilities, and our globally recognized auto show.”

John O’Donnell
President & CEO, Washington Area New Automobile Dealers Association (WANADA)

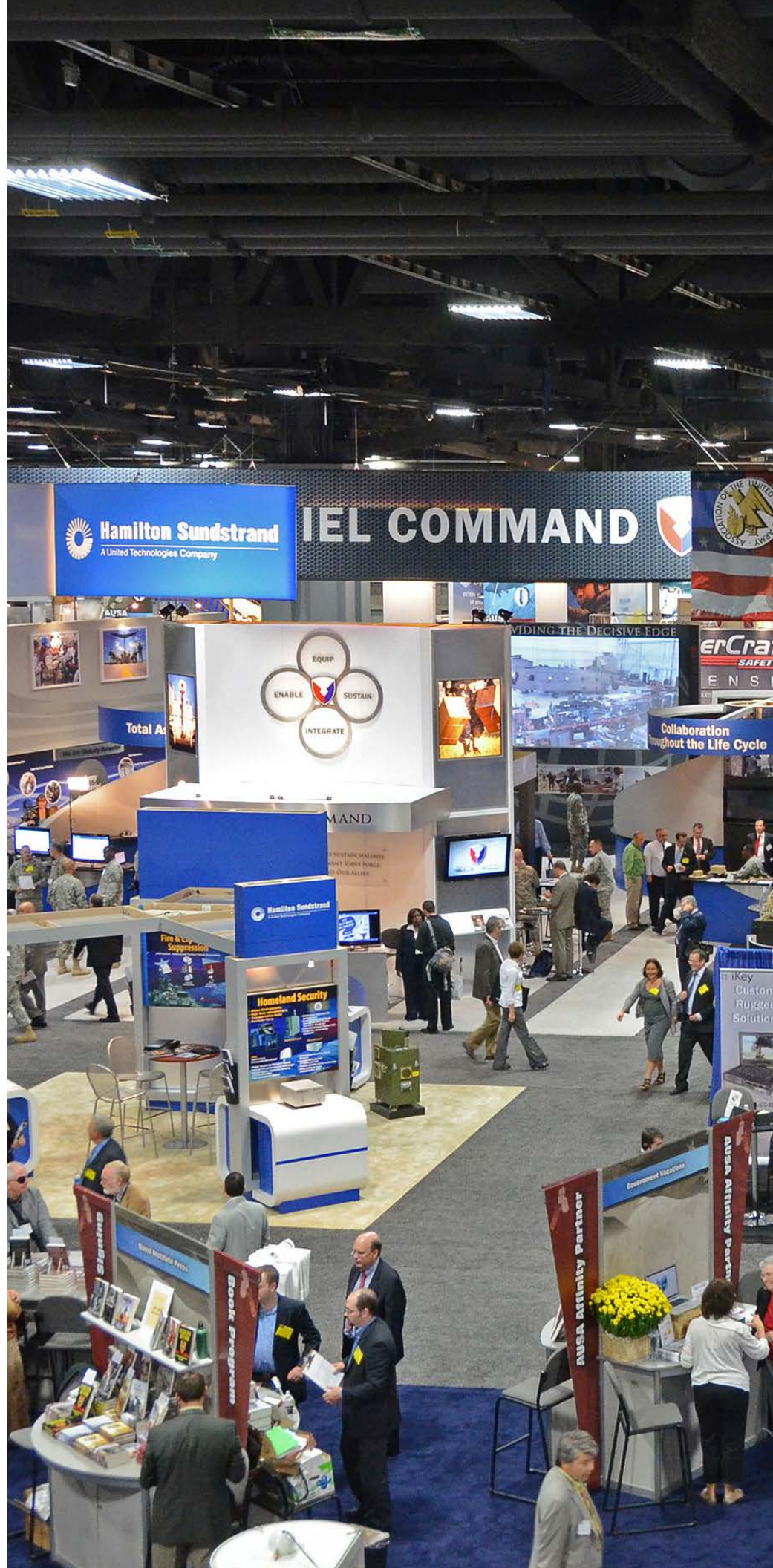
INNO- VATION ON DIS- PLAY

Association of the United States Army (AUSA) Annual Meeting and Exhibition

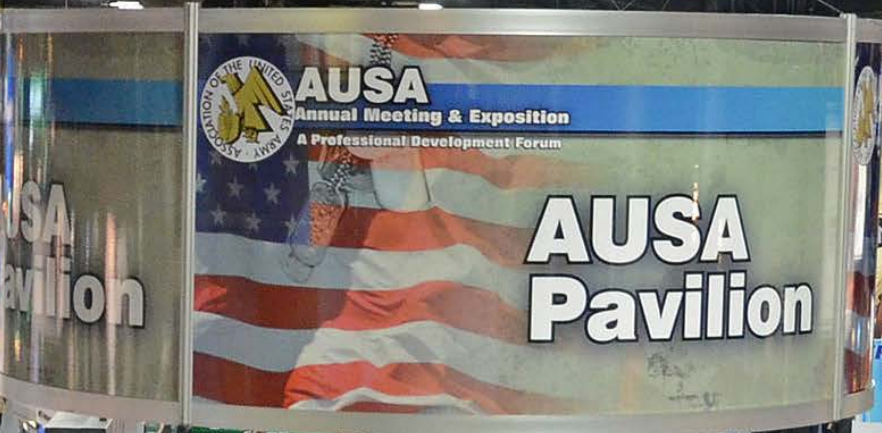
The Association of the United States Army (AUSA) Annual Meeting and Exhibition is the largest land-power exposition and professional development forum in North America with more than 500 Army and Industry exhibitors using five halls and more than 703,000 square feet of exhibit space. For three days, the meeting welcomed more than 30,000 attendees—including senior leaders from the U.S. Army, the Department of Defense and foreign dignitaries—to the Walter E. Washington Convention Center.

“The Association of the United States Army (AUSA) was created to tell the Soldier’s story. Bringing our Annual Meeting to the Walter E. Washington Convention Center, in the heart of the nation’s capital, has enhanced our ability to tell that story effectively, said Ret. Gen. Gordon R. Sullivan, president of the Association of the United States Army (AUSA). “Our relationship with the Convention Center team has evolved into an extraordinary partnership that provides a foundation for our continued growth.”

Ret. General Gordon R. Sullivan
President, Association of the United States Army (AUSA)



AUSA
Annual Meeting & Exposition
A Professional Development Forum



AUSA
Annual Meeting & Exposition
A Professional Development Forum

AUSA Pavilion

ASH
The World's Choice

ISRAEL

FRANCE
FRANCE

HGH
Infrared Systems

Roxel
Professional Displays

HGH
Evolution 360

iKey
Mil-Spec Peripherals



iKey
Rugged Keyboards



- Excellent 2MB Peripherals
- Backlight Technology
- Nonconductive Design

ECSCASE
Protect



ASSOCIATION OF THE UNITED STATES ARMY

WELCOME



ECSCASE
Protect



A CLOSER LOOK





THE ULTIMATE FOODIE EVENT COMES TO LIFE

2018 RAMMY Awards Gala

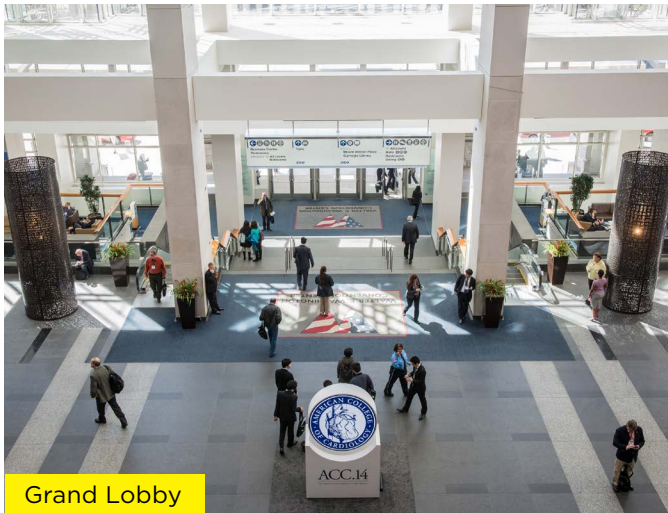
Presented by the Restaurant Association Metropolitan Washington (RAMW), The RAMMY Awards Gala honors the exceptional ability and accomplishments of the hard-working individuals and organizations of the Washington, DC region's restaurant and foodservice community.

This event has grown to become DC's #1 food & restaurant industry event, The RAMMYS celebrate one of Metropolitan Washington's greatest assets: its restaurants, with a highend open-concept gala featuring the top food & beverage options that the city has to offer

DETAILS

Room Types
Facility Overview
Floor Plans
What's Required
What's Included
Additional Costs

SPACE FOR EVERY NEED



Grand Lobby

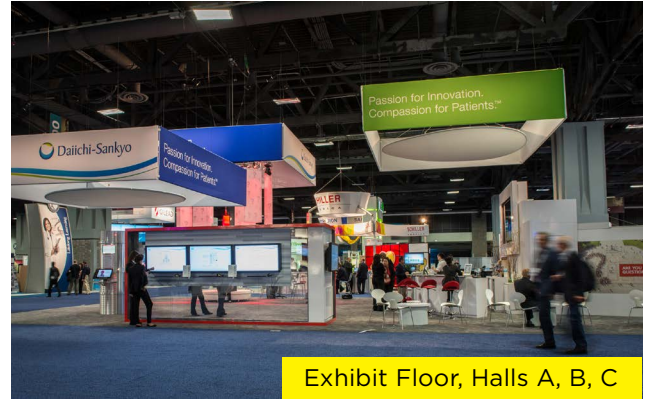


Exhibit Floor, Halls D, E



Halls A, B, C





FACILITY OVERVIEW

The Walter E. Washington Convention Center, an extraordinary 2.3 million-square-foot conventions and meetings facility, is equipped to handle events of all sizes, from small groups and break-out meetings to events for 50 to 42,000 attendees.

One of the most energy-efficient buildings for its size, the Convention Center includes a range of mixed-use exhibit spaces, 198,000 square feet of flexible meeting space with a total of 77 meeting rooms and the largest ballroom in the Mid-Atlantic region.

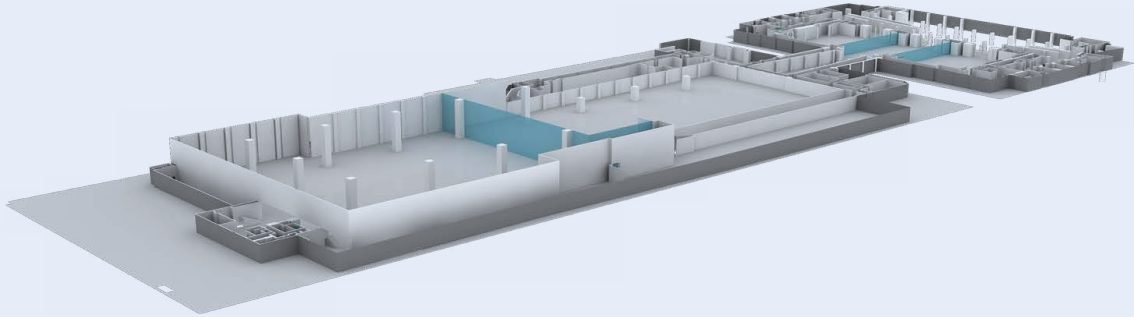
2.3 million total
square feet

703,000
square feet of
exhibit space

198,000
square feet of
flexible meeting space

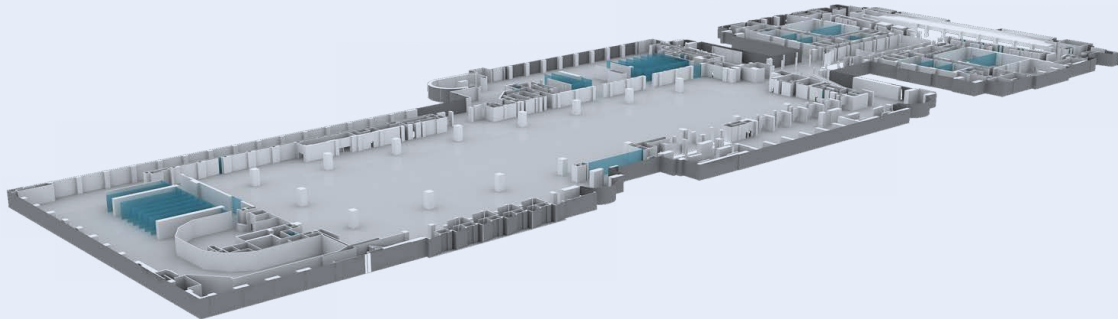
52,000
square-foot ballroom

77 meeting
rooms



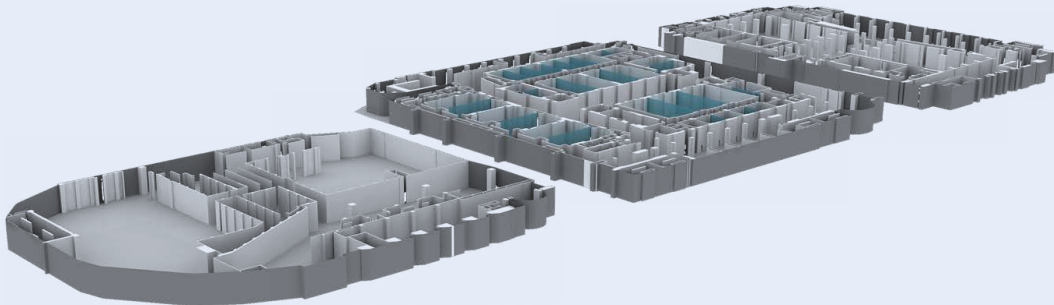
L3

LEVEL 3



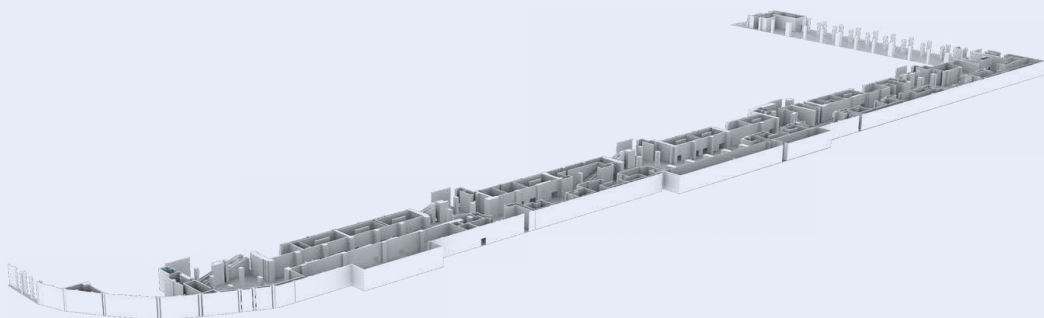
L2

LEVEL 3



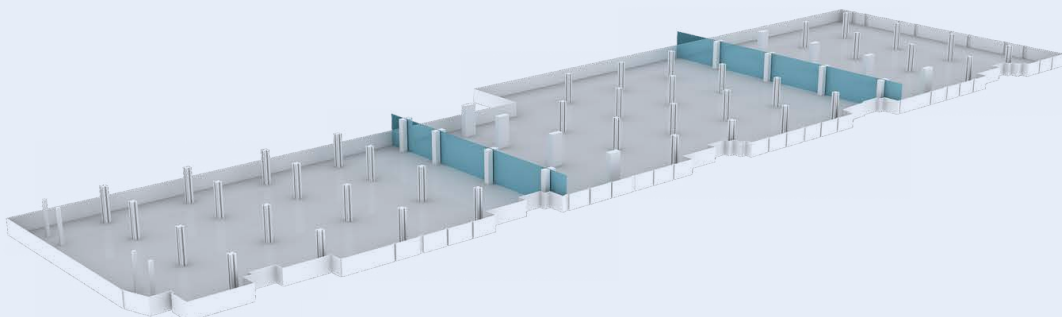
L1

STREET LEVEL



C

CONCOURSE



LL

LOWER LEVEL



Lower Level

(Level L)
Exhibit Halls A, B & C

Halls A, B & C

HALL A

151,000 square feet

HALL B

194,000 square feet

HALL C

128,000 square feet

TOTAL CONTIGUOUS SQUARE FEET

473,000

2,500 booths (10 feet x 10 feet)

COLUMNS

Predominantly 90-foot centers; 60-foot centers on the northeast sides of Halls B and C

CEILING HEIGHT

Predominantly 30 feet; 10,000 square foot area at 12 feet on south side of Hall A

FREIGHT DOCKS

39 enclosed docks

FREIGHT ACCESS

3 drive-in doors (25 feet wide x 15 feet high)
2 overhead doors (19 feet wide x 15 feet high)

FLOOR LOAD CAPACITY

350 lbs. per square foot

LIGHTING

Hi Bay fluorescent and dimmable incandescent

UTILITIES AND SERVICES

Floor Boxes on 30 foot centers contain:

Electrical

120/208 volt, single phase and 3 phase

Telephone/Data

Voice and data outlets; single mode and multimode fiber connections

Audio and Video at Multiple Boxes

XLR mic and line connectors

Plumbing

3-inch drain

On Columns:

Electrical

120/208 volt, single phase and 3 phase

Audio and Video at Multiple Columns

Paging, video, multipin audio connectors

Plumbing

1-inch water line; 1-inch compressed air pipe; can be routed to floor boxes via conduit in floor

Overhead

20/208 volt, single phase and 3 phase

FOOD SERVICE

Three permanent concession stands

RESTROOMS

7 sets of men's and women's rooms, (2 in Halls A and C, 3 in Hall B)

SHOW OFFICES

Overlooking halls, see Concourse Level

FIRST AID

Permanent room; access from inside Hall A and loading dock

KITCHEN

8,000-square-foot service kitchen on south side of Hall A

Information

Capacities and Dimensions

Room #	Usable Dimensions FT, length x width	Usable Dimensions M, length x width	Usable SQ FT	Usable SQ Meters	Ceiling Height	
					FT	M
Hall ABC	353'7" x 1347' w	107.7m x 410.5m	473,000	43,943.1	30'	9.1
Hall AB	353'7" x 929'9" w	107.7m x 283.4m	345,000	32,051.5	30'	9.1
Hall BC	353'7" x 957'7" w	107.7m x 291.8m	322,000	29,914.8	30'	9.1
Hall A	353'7" x 390'4" w	107.7m x 118.9m	151,000	14,028.4	30'	9.1
Hall B	353'7" x 540' w	107.7m x 164.6m	194,000	18,023.2	30'	9.1
Hall C	275'10" x 416'10" w	84.1m x 127.1m	128,000	11,891.6	30'	9.1

Subtotals based on maximum room configuration capacity

Fire Dept. Columns, Water, Compressed Air & Natural Gas

Hall A					Hall B					Hall C				
Column #	FDC	Water	Comp. Air	Nat. Gas	Column #	FDC	Water	Comp. Air	Nat. Gas	Column #	FDC	Water	Comp. Air	Nat. Gas
A-1		X	X		B-1			X		C-1			X	
A-2			X		B-2			X		C-2			X	
A-3		X	X		B-3			X		C-3		X	X	
A-4			X		B-4			X		C-4			X	
A-4+		X	X		B-4+			X		C-4+			X	
A-5			X	X	B-5	X	X	X		C-5			X	
A-6		X	X	X	B-6			X		C-6		X	X	
A-7	X		X		B-7	X	X	X		C-7	X		X	
A-8		X	X		B-8			X		C-8			X	
A-8+			X		B-8+			X		C-8+		X	X	
A-9		X	X	X	B-9			X		C-9	X	X	X	X
A-10			X		B-10		X	X		C-10	X		X	
A-11		X	X		B-11			X		C-11		X	X	X
A-12			X		B-12		X	X		C-12			X	
A-12+			X	X	B-12+			X		C-12+			X	X
A-13			X		B-13			X	X	C-13			X	
A-14		X	X		B-14		X	X		C-14		X	X	
A-15	X		X		B-15	X		X		C-15	X		X	
A-16		X	X		B-16		X	X	X	C-16			X	
A-16+			X	X	B-16+			X	X	C-16+		X	X	
					B-17		X	X		C-17	X	X	X	
					B-18			X		C-18			X	
					B-19		X	X		C-19		X	X	
					B-19+			X		C-20			X	
					B-20			X		C-20+			A	
					B-21			X		C-21				
					B-22	X	X	X		C-22				
					B-23			X		C-23				
					B-23+		X	X		C-24				
										C-24+				

Column number with "+" indicates eastern wall in line with previous column



Lower Level

(Level L)
Exhibit Halls A, B & C

Halls A, B & C

HALL A

151,000 square feet

HALL B

194,000 square feet

HALL C

128,000 square feet

TOTAL CONTIGUOUS SQUARE FEET

473,000

2,500 booths (10 feet x 10 feet)

COLUMNS

Predominantly 90-foot centers; 60-foot centers on the northeast sides of Halls B and C

CEILING HEIGHT

Predominantly 30 feet; 10,000 square foot area at 12 feet on south side of Hall A

FREIGHT DOCKS

39 enclosed docks

FREIGHT ACCESS

3 drive-in doors (25 feet wide x 15 feet high)
2 overhead doors (19 feet wide x 15 feet high)

FLOOR LOAD CAPACITY

350 lbs. per square foot

LIGHTING

Hi Bay fluorescent and dimmable incandescent

UTILITIES AND SERVICES

Floor Boxes on 30 foot centers contain:

Electrical

120/208 volt, single phase and 3 phase

Telephone/Data

Voice and data outlets; single mode and multimode fiber connections

Audio and Video at Multiple Boxes

XLR mic and line connectors

Plumbing

3-inch drain

On Columns:

Electrical

120/208 volt, single phase and 3 phase

Audio and Video at Multiple Columns

Paging, video, multipin audio connectors

Plumbing

1-inch water line; 1-inch compressed air pipe; can be routed to floor boxes via conduit in floor

Overhead

20/208 volt, single phase and 3 phase

FOOD SERVICE

Three permanent concession stands

RESTROOMS

7 sets of men's and women's rooms, (2 in Halls A and C, 3 in Hall B)

SHOW OFFICES

Overlooking halls, see Concourse Level

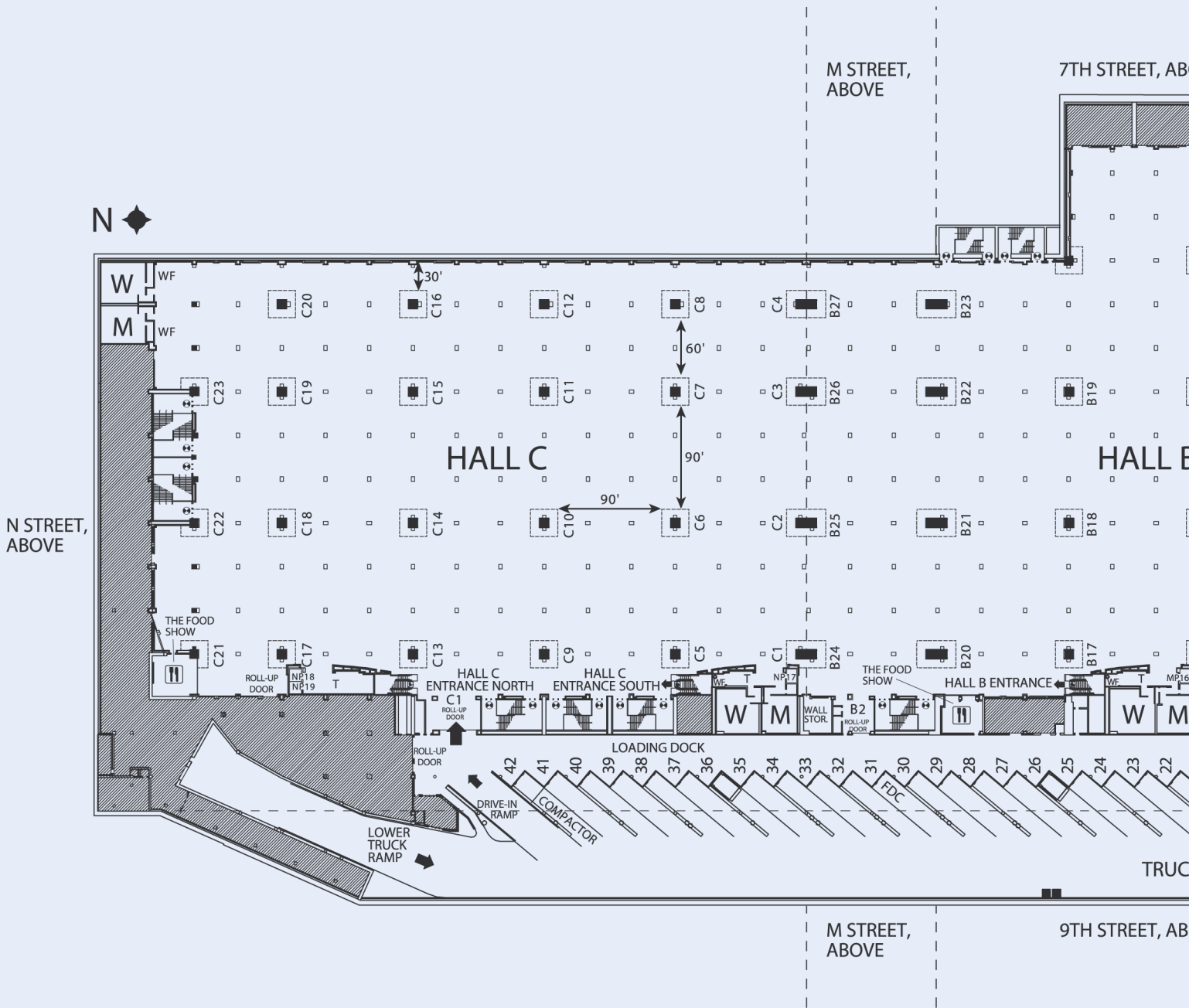
FIRST AID

Permanent room; access from inside Hall A and loading dock

KITCHEN

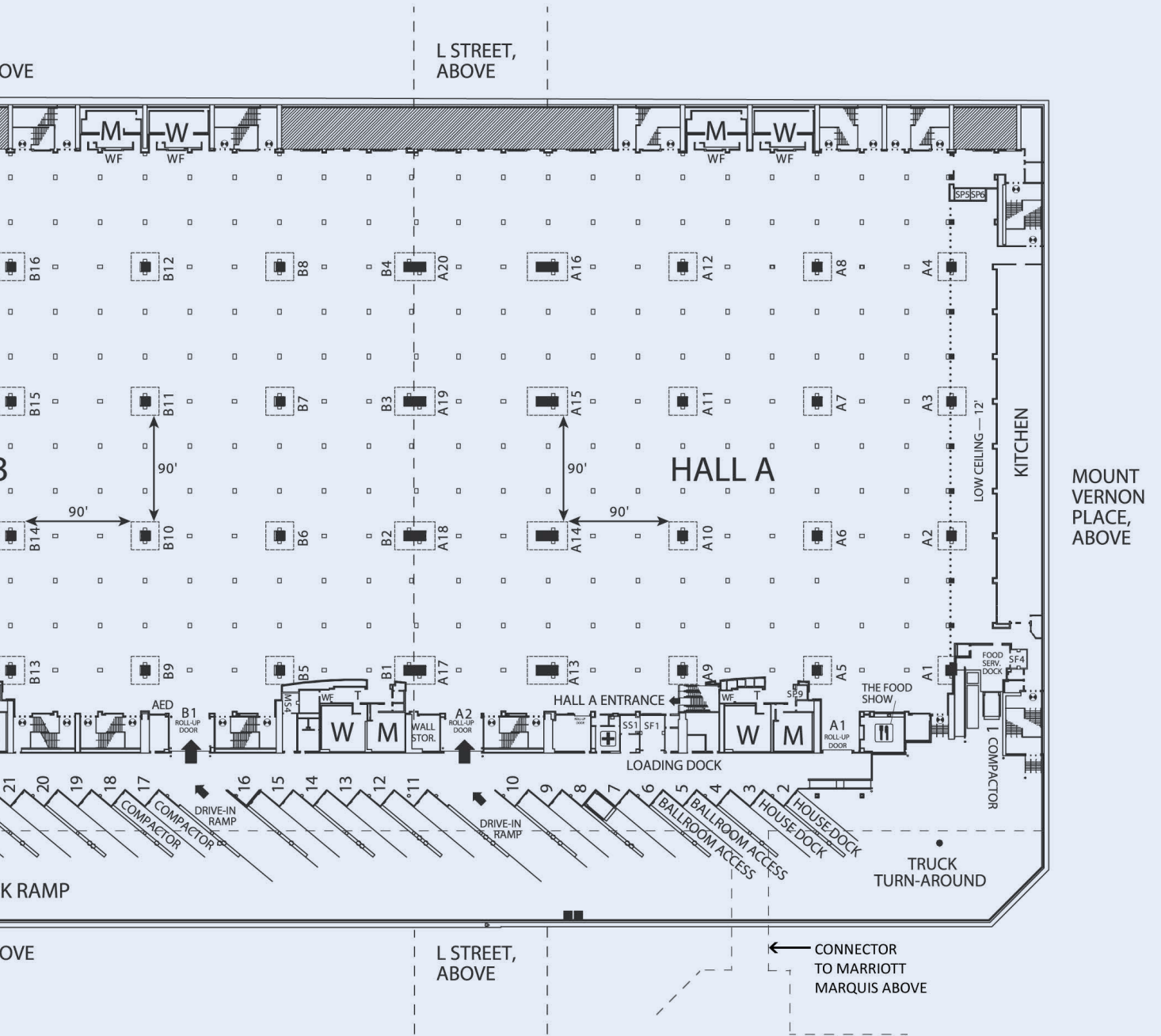
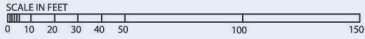
8,000-square-foot service kitchen on south side of Hall A

Floor Plan



BUILDING LEGEND

<ul style="list-style-type: none"> ■ - COLUMNS W - WOMEN'S RESTROOM M - MEN'S RESTROOM E - ESCALATOR ☐ - CONCESSIONS ▨ - MECHANICAL AREAS ⊙ - EXIT 	<ul style="list-style-type: none"> T - TELEPHONES S - STROBES F - FIRE EXTINGUISHER CABINET A - ART WF - WATER FOUNTAIN TH - THERMOSTAT AED - AUTOMATIC EXTERNAL DEFIBRILLATORS 	<p>ELEVATOR LEGEND</p> <p>BUILDING TYPE</p> <ul style="list-style-type: none"> S - SOUTH M - MIDDLE N - NORTH <p>ELEVATOR TYPE</p> <ul style="list-style-type: none"> F - FREIGHT ELEVATOR P - PASSENGER ELEVATOR S - SERVICE ELEVATOR <p>EXAMPLE: MP16=MIDDLE PASSENGER ELEVATOR #16</p>	<p>LINETYPE LEGEND</p> <ul style="list-style-type: none"> ----- ROLL-UP DOORS ----- AIRWALLS LOW CEILING
-------------------------------------------------------------------------------------------------------------------------------------------------------------------------------------------------------------------------	------------------------------------------------------------------------------------------------------------------------------------------------------------------------------------------------------------------------------------------------------	----------------------------------------------------------------------------------------------------------------------------------------------------------------------------------------------------------------------------------------------------------------------------------------------------------------------------------------------------------------------------------	--------------------------------------------------------------------------------------------------------------------------------------------------------





Concourse

(Level C)
Exhibit Halls A, B & C

Halls A, B & C

Show Offices

(overlooking halls)

HALL A

1,050 square feet

HALL B

800 square feet

HALL C

800 square feet

All the show offices on this level have restrooms.



ActiveVideo

anced TV Platform
ely in the cloud.

ORANGE SYSTEMS

omining





Concourse

(Level C)
Exhibit Halls A, B & C

Halls A, B & C

Show Offices

(overlooking halls)

HALL A

1,050 square feet

HALL B

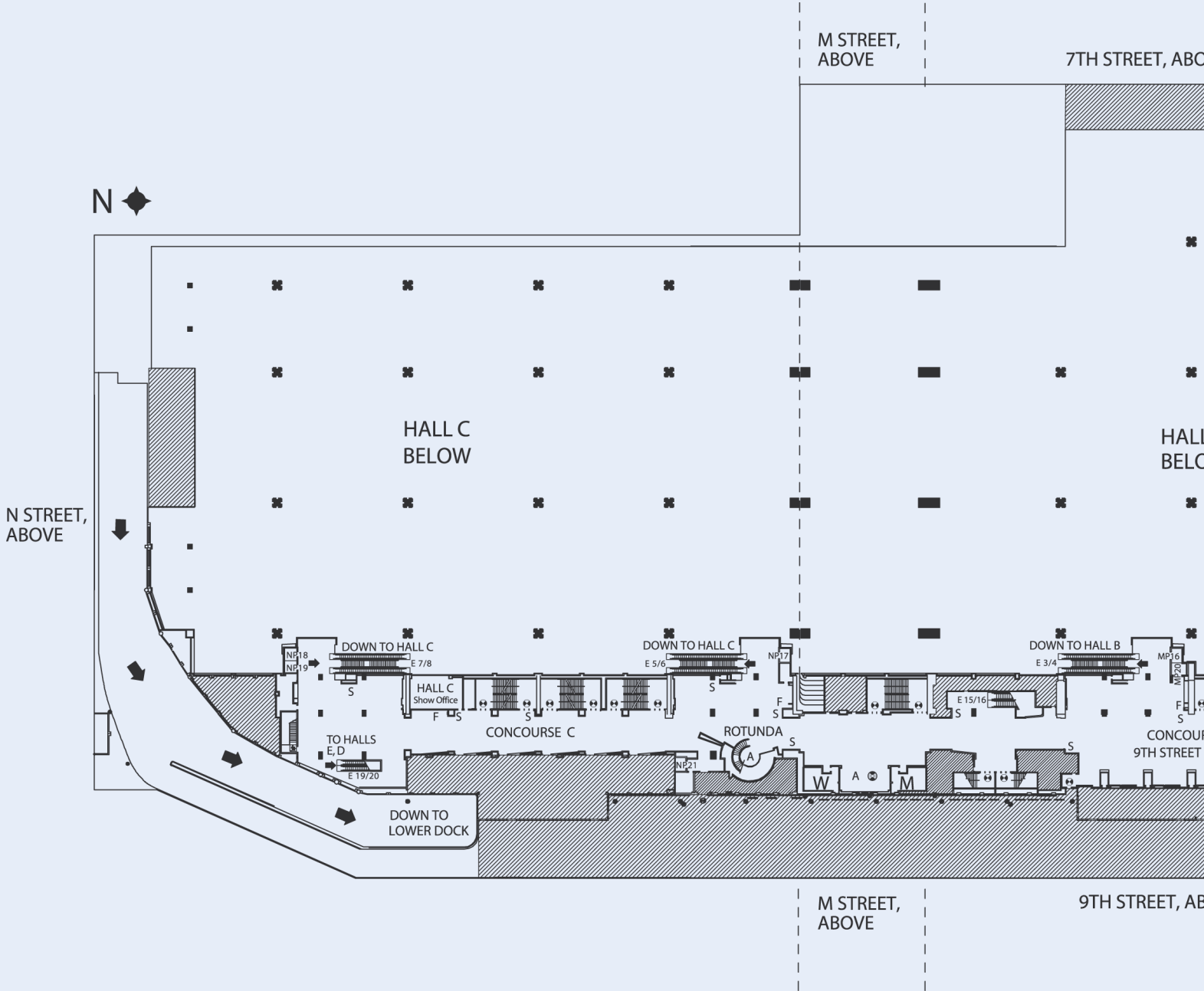
800 square feet

HALL C

800 square feet

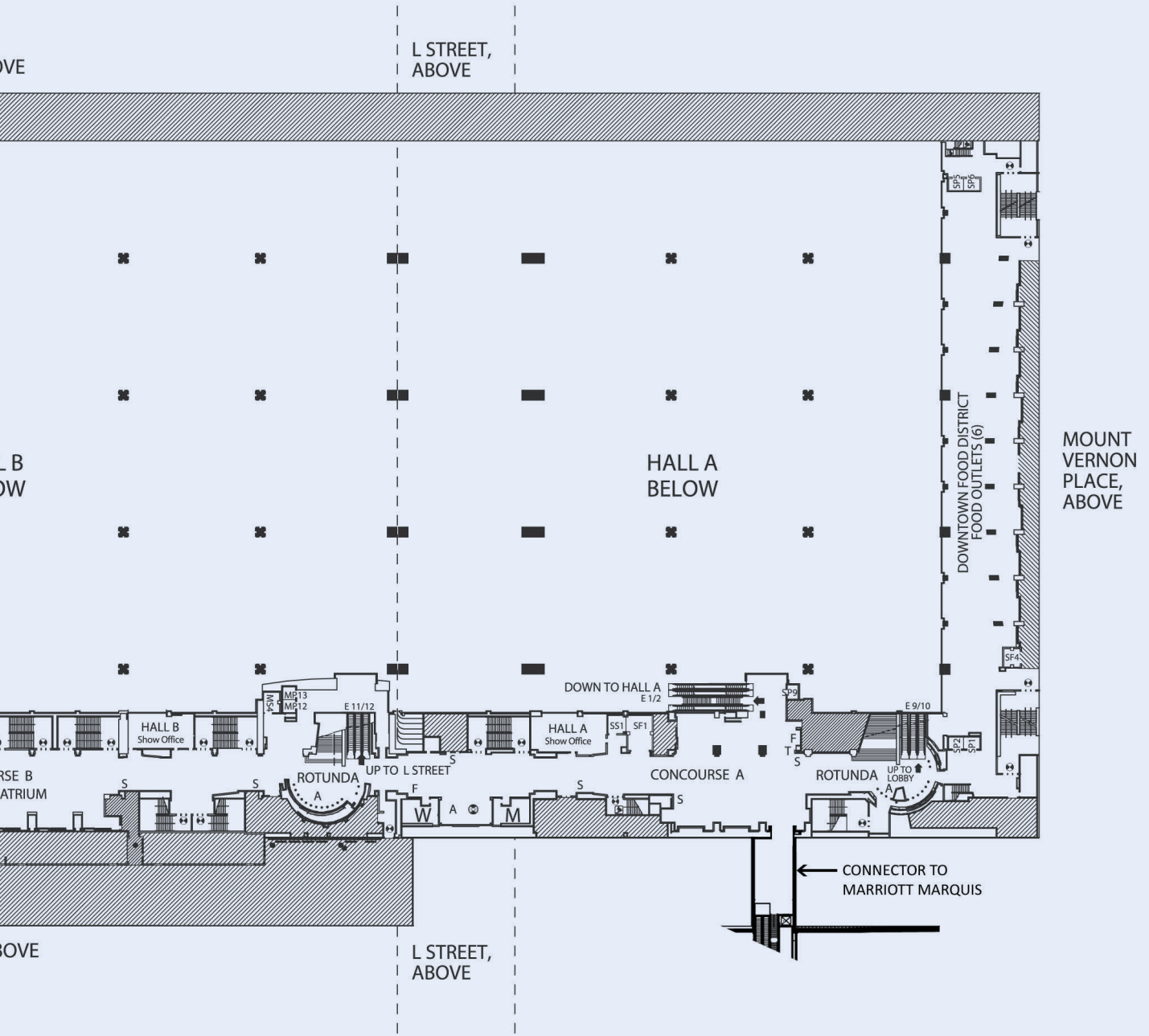
All the show offices on this level have restrooms.

Floor Plan



BUILDING LEGEND

<ul style="list-style-type: none"> ■ - COLUMNS W - WOMEN'S RESTROOM M - MEN'S RESTROOM E - ESCALATOR ☐ - CONCESSIONS ▨ - MECHANICAL AREAS ⊙ - EXIT ⊙ - WiFi 	<ul style="list-style-type: none"> T - TELEPHONES S - STROBES F - FIRE EXTINGUISHER CABINET A - ART WF - WATER FOUNTAIN TH - THERMOSTAT 	<p>ELEVATOR LEGEND</p> <p>BUILDING TYPE</p> <ul style="list-style-type: none"> S - SOUTH M - MIDDLE N - NORTH <p>ELEVATOR TYPE</p> <ul style="list-style-type: none"> F - FREIGHT ELEVATOR P - PASSENGER ELEVATOR S - SERVICE ELEVATOR <p>EXAMPLE: MP16=MIDDLE PASSENGER ELEVATOR #16</p>	<p>LINETYPE LEGEND</p> <ul style="list-style-type: none"> ----- ROLL-UP DOORS ----- AIRWALLS LOW CEILING
-------------------------------------------------------------------------------------------------------------------------------------------------------------------------------------------------------------------------------------------	-----------------------------------------------------------------------------------------------------------------------------------------------------------------------------------------------------	----------------------------------------------------------------------------------------------------------------------------------------------------------------------------------------------------------------------------------------------------------------------------------------------------------------------------------------------------------------------------------	--------------------------------------------------------------------------------------------------------------------------------------------------------





Street Level

(Level 1)

Grand Lobby/Registration/Salons A-I

Meeting Rooms 101-103 & 140-160

Loading Dock Entrance

Metro Entrance

Grand Lobby

Glass and wood walls with a dramatic staircase

SQUARE FEET

15,000

CEILING HEIGHT

More than 80 feet

LIGHTING

Dimmable incandescent with uplighting on skylights

FLOOR

Granite

COMPLIMENTARY WIFI

FOOD SERVICE

Café and lounge; access to restaurant below

RESTROOMS

2 sets of men's and women's rooms

Meeting Rooms

101-103 & 140-160

UTILITIES AND SERVICES

Electrical

Wall: 100 amp/208 110 volt
3 phase; 400 amp/208 110 volt 3 phase
Floor: 30A 3 phase

Telephone/Data

Voice and data connections; single mode and multimode fiber connections

Audio and Video

XRL mic and line connectors

LIGHTING

Fluorescent and dimmable incandescent

RESTROOMS

4 sets of men's and women's rooms

Information

Capacities and Dimensions

Room #	Usable Dimensions FT, length x width	Usable Dimensions M, length x width	Usable SQ FT	Usable SQ Meters	Ceiling Height				
					FT	M	Theater*	Banquet**	Classroom***
101	52'6" x 38'2"	16m x 11.6m	2000	185.8	12'6"	3.8	206	120	72
102AB	72'3" x 45'9"	22m x 13.9m	3700	343.7	12'6"	3.8	357	190	132
102A	45'9" x 29'6"	13.9m x 8.9m	1400	130.0	12'6"	3.8	130	70	42
102B	53'9" x 36'9"	16.4m x 11.2m	2300	213.7	12'6"	3.8	228	120	70
103AB	78'7" x 47'8"	23.9 x 14.6	4240	393.9	12'5"	3.8	424	212	170
103A	47' x 48'	14.3 x 14.6	2500	232.3	12'5"	3.8	242	130	99
103B	42'3" x 36'9"	12.8 x 11.2	1740	161.7	12'5"	3.8	174	87	70
140AB	62'8" x 51'8"	19.1m x 15.7m	3500	325.1	18'	5.5	384	200	150
140A	51'8" x 30'6"	15.7m x 9.3m	1800	167.2	18'	5.5	180	80	54
140B	51'8" x 30'6"	15.7m x 9.3m	1800	167.2	18'	5.5	180	80	54
141	28'3" x 29'	8.6m x 8.8m	800	74.3	18'	5.5	70	40	24
142	29'7" x 27'8"	9m x 8.4m	840	78.0	18'	5.5	77	40	24
143ABC	85' x 56'6"	25.9m x 17.2m	4800	445.9	17'7"	5.4	545	240	200
143AB	57'6" x 56'6"	17.5m x 17.2m	3250	301.9	17'7"	5.4	364	160	128
143BC	57'6" x 56'6"	17.5m x 17.2m	3250	301.9	17'7"	5.4	364	160	128
143A	56'6" x 27'6"	17.2m x 8.4m	1600	148.6	17'7"	5.4	117	80	54
143B	56'6" x 30'	17.2m x 9.1m	1650	153.3	17'7"	5.4	117	80	54
143C	56'6" x 27'6"	17.2m x 8.4m	1600	148.6	17'7"	5.4	117	80	54
144ABC	87'1" x 56'6"	26.5m x 17.2m	4800	445.9	17'7"	5.4	546	240	200
144AB	59'3" x 56'6"	18.1m x 17.2m	3250	301.9	17'7"	5.4	364	160	128
144BC	57'6" x 56'6"	17.5m x 17.2m	3250	301.9	17'7"	5.4	364	160	128
144A	56'6" x 27'6"	17.2m x 8.4m	1600	148.6	17'7"	5.4	117	80	54
144B	56'6" x 30'	17.2m x 9.1m	1650	153.3	17'7"	5.4	117	80	54
144C	56'6" x 27'6"	17.2m x 8.4m	1600	148.6	17'7"	5.4	117	80	54
145AB	74'2" x 73'	22.6m x 22.3m	5600	520.3	17'3"	5.3	684	300	264
145A	74'2" x 36'6"	22.6m x 11.1m	2800	260.1	17'3"	5.3	285	120	108
145B	74'2" x 36'6"	22.6m x 11.1m	2800	260.1	17'3"	5.3	285	120	108
146ABC	153'10" x 82'2"	46.9m x 25m	12500	1,161.3	17'-22"	5.2-6.7	1458	670	529
146AB	102'11" x 82'2"	31.4m x 25m	8300	771.1	17'-22"	5.2-6.7	918	430	319
146BC	102'11" x 82'2"	31.4m x 25m	8300	771.1	17'-22"	5.2-6.7	918	430	319
146A	82'2" x 50'11"	25m x 15.5m	4200	390.2	17'-22"	5.2-6.7	432	240	189
146B	82'2" x 52'	25m x 15.8m	4100	380.9	17'-22"	5.2-6.7	522	210	193
146C	82'2" x 50'11"	25m x 15.5m	4200	390.2	17'-22"	5.2-6.7	432	240	189
147AB	74'2" x 74'7"	22.6m x 22.7m	5600	520.3	17'3"	5.3	560	300	264
147A	74'2" x 36'6"	22.6m x 11.1m	2800	260.1	17'3"	5.3	285	120	108
147B	74'2" x 36'6"	22.6m x 11.1m	2800	260.1	17'3"	5.3	285	120	108
148	28' x 25'1"	8.5m x 7.6m	700	65.0	14'	4.3	56	30	16
149AB	64' x 27'	19.5m x 8.2m	1800	167.2	17'6"	5.3	192	100	60
149A	37'7" x 27'	11.5m x 8.2m	1000	92.9	17'6"	5.3	96	40	30
149B	27' x 28'11"	8.2m x 8.8m	800	74.3	17'6"	5.3	84	40	24
150AB	70'10" x 73'11"	21.6m x 22.3m	5300	492.4	17'3"	5.3	594	300	242
150A	70'10" x 37'	21.6m x 11.3m	2700	250.8	17'3"	5.3	270	150	108
150B	70'10" x 37'	21.6m x 11.3m	2700	250.8	17'3"	5.3	270	150	108
151AB	63'4" x 89'2"	19.3m x 27.2m	6000	557.4	17'3"	5.3	609	300	234
151A	63'4" x 42'	19.3m x 12.8m	3100	287.9	17'3"	5.3	288	150	110
151B	63'4" x 42'	19.3m x 12.8m	3100	287.9	17'3"	5.3	288	150	110
152AB	70'10" x 74'	21.6m x 22.5m	5300	492.4	17'3"	5.3	594	300	242
152A	70'10" x 37'	21.6m x 11.3m	2700	250.8	17'3"	5.3	270	150	108
152B	70'10" x 37'	21.6m x 11.3m	2700	250.8	17'3"	5.3	270	150	108
153	28' x 25'1"	8.5m x 7.6m	700	65.0	14'	4.3	48	30	24
154AB	76'8" x 27'	23.4m x 8.2m	2100	195.1	17'6"	5.3	228	100	72
154A	37'7" x 27'	11.5m x 8.2m	1000	92.9	17'6"	5.3	108	40	30
154B	39'11" x 27'	12.2m x 8.2m	1100	102.2	17'6"	5.3	108	50	30
155	37'2" x 22'4"	11.3m x 6.8m	800	74.3	14'	4.3	74	40	24
156	48'7" x 28'9"	14.8m x 8.8m	1500	139.4	17'6"	5.3	144	80	70
157	28'2" x 18'3"	8.2m x 5.6m	530	49.2	14'	4.3	40	20	18
158AB	59'3" x 27'	18.1m x 8.2m	1500	139.4	14'	4.3	140	80	54
158A	22'6" x 24'	6.9m x 7.3m	750	69.7	14'	4.3	65	40	24
158B	22'6" x 24'	6.9m x 7.3m	750	69.7	14'	4.3	65	40	24
159AB	59'3" x 24'	18.1m x 7.3m	1500	139.4	14'	4.3	140	80	54
159A	22'6" x 24'	6.9m x 7.3m	750	69.7	14'	4.3	65	40	24
159B	22'6" x 24'	6.9m x 7.3m	750	69.7	14'	4.3	65	40	24
160	24' x 19'7"	7.3m x 5.9m	600	55.7	14'	4.3	45	20	18

* Theater capacities based on chairs set 36" from front edge to front edge.

** Banquet capacities based on 10 chairs per 6' round table set on 11' centers.

*** Classroom capacities based on 3 chairs per 8' x 18" table and 2 chairs per 6' x 18" table.



Street Level

(Level 1)

Grand Lobby/Registration/Salons A-I

Meeting Rooms 101-103 & 140-160

Loading Dock Entrance

Metro Entrance

Grand Lobby

Glass and wood walls with a dramatic staircase

SQUARE FEET

15,000

CEILING HEIGHT

More than 80 feet

LIGHTING

Dimmable incandescent with uplighting on skylights

FLOOR

Granite

COMPLIMENTARY WIFI

FOOD SERVICE

Café and lounge; access to restaurant below

RESTROOMS

2 sets of men's and women's rooms

Meeting Rooms

101-103 & 140-160

UTILITIES AND SERVICES

Electrical

Wall: 100 amp/208 110 volt
3 phase; 400 amp/208 110 volt 3 phase
Floor: 30A 3 phase

Telephone/Data

Voice and data connections; single mode and multimode fiber connections

Audio and Video

XRL mic and line connectors

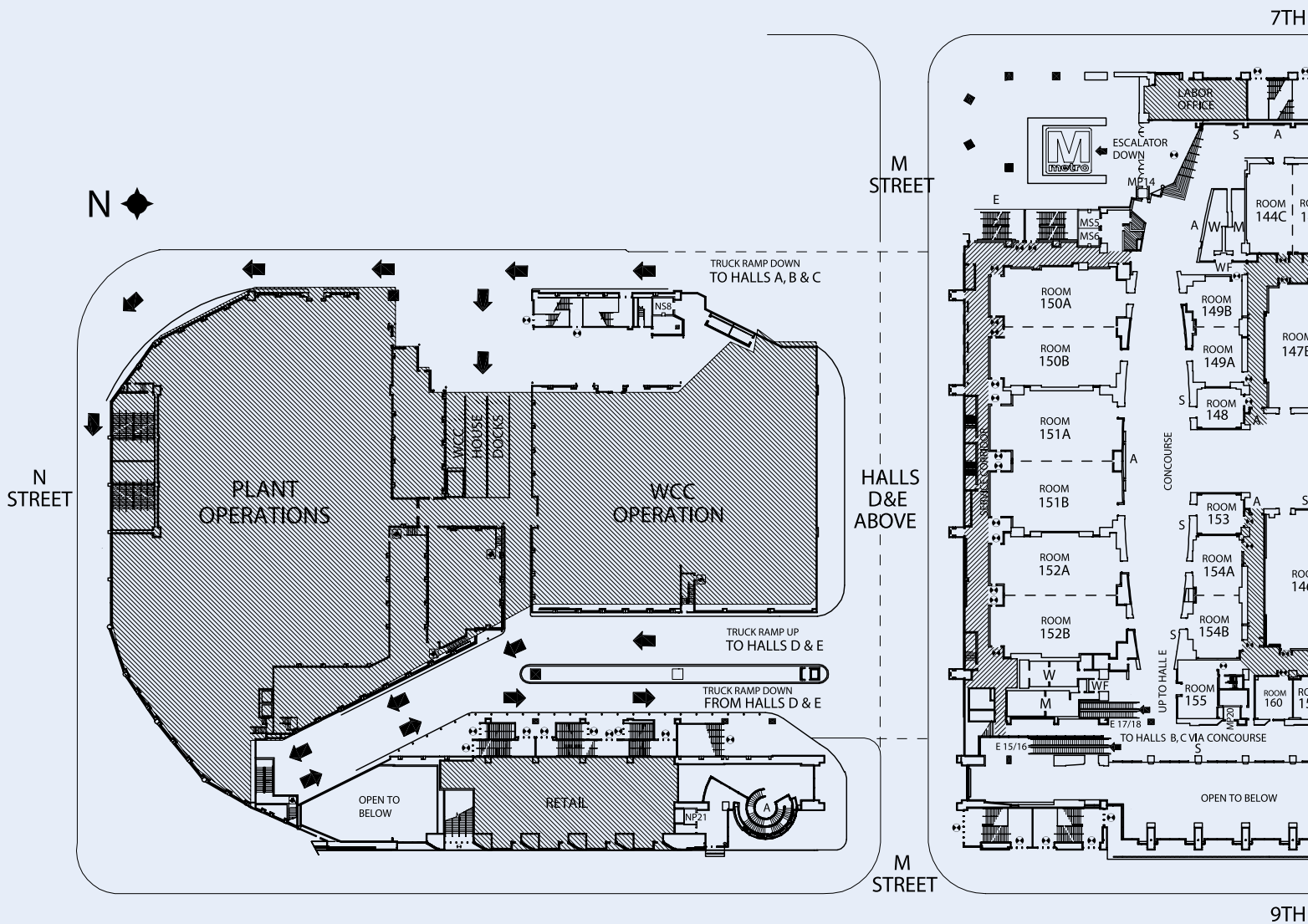
LIGHTING

Fluorescent and dimmable incandescent

RESTROOMS

4 sets of men's and women's rooms

Floor Plan



7TH

9TH

BUILDING LEGEND

- - COLUMNS
- W - WOMEN'S RESTROOM
- M - MEN'S RESTROOM
- E - ESCALATOR
- [H] - CONCESSIONS
- [Hatched Box] - MECHANICAL AREAS
- [Circle with Arrow] - EXIT
- [Circle with WiFi Symbol] - WiFi

- T - TELEPHONES
- S - STROBES
- F - FIRE EXTINGUISHER CABINET
- A - ART
- WF - WATER FOUNTAIN
- TH - THERMOSTAT
- ATM - AUTOMATIC TELLER MACHINE
- AED - AUTOMATIC EXTERNAL DEFIBRILLATORS

ELEVATOR LEGEND

BUILDING TYPE

- S - SOUTH
- M - MIDDLE
- N - NORTH

ELEVATOR TYPE

- F - FREIGHT ELEVATOR
- P - PASSENGER ELEVATOR
- S - SERVICE ELEVATOR

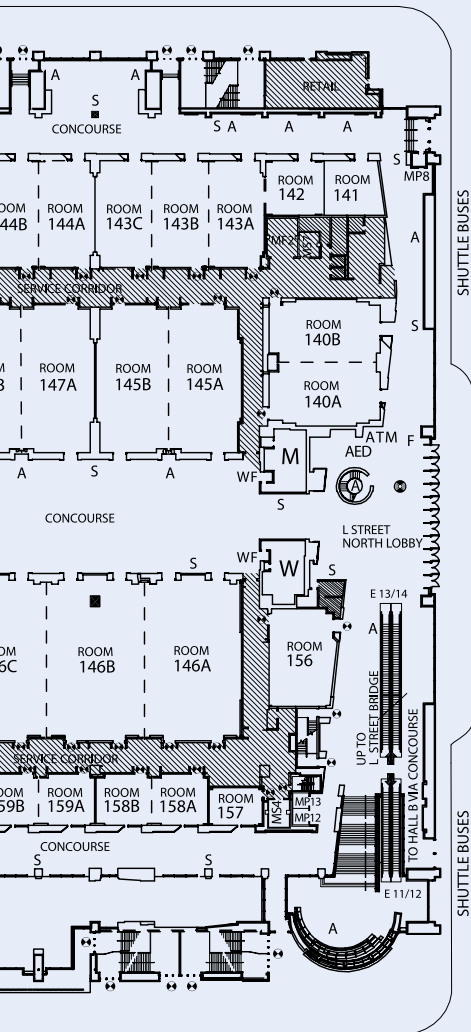
EXAMPLE: MP16=MIDDLE PASSENGER ELEVATOR #16

LINETYPE LEGEND

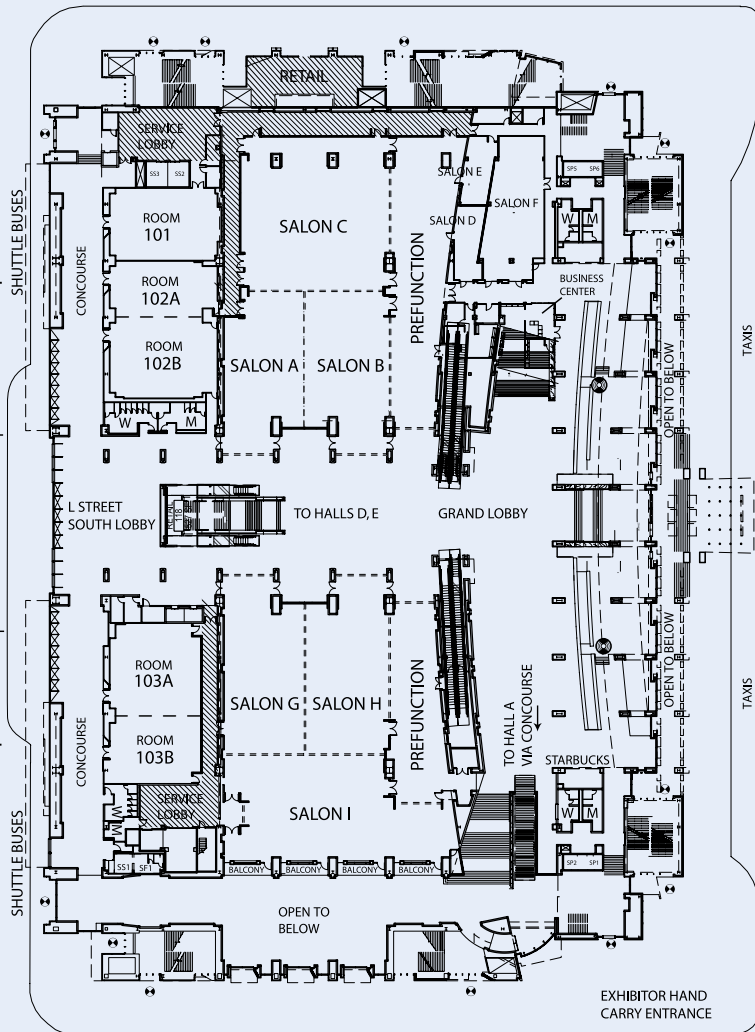
- ROLL-UP DOORS
- AIRWALLS
- LOW CEILING
- SKYFOLD AIRWALLS



STREET



STREET



MOUNT VERNON PLACE

EXHIBITOR HAND CARRY ENTRANCE



East & West Salons

SQUARE FEET

40,000

CEILING HEIGHT

10 - 18 feet

EAST FREIGHT ACCESS

2 service elevators located on east side for access to Halls D and E loading docks above

WEST FREIGHT ACCESS

1 service elevator located on the west side for access to Halls A, B and C loading docks below

FLOOR LOAD CAPACITY

100 lbs. per square foot

FLOOR

Carpeted

LIGHTING

Dimmable fluorescent with bi-level switching and dimmable incandescent

UTILITIES AND SERVICES

Electrical

20 amp/120 volt on walls at 15 foot centers

100 amp/208 volt on walls at 30 foot centers

Wall: 100 amp/208 110 volt 3 phase

400 amp/208 110 volt 3 phase

Floor: 30A 3 phase

Telephone/Data

Voice and data outlets; single mode and multimode fiber connections

Audio and Video

XRL mic and line connectors

Audio inputs

Information

Capacities and Dimensions: Salons A-1

Room #	Usable Dimensions		Usable SQ FT	Usable SQ Meters	Ceiling Height		Theater*	Banquet**	Classroom***
	FT, length x width	M, length x width			FT	M			
East Salon									
A	42' x 72'	12.8 x 21.9	3205	976.9	18	5.5	260	120	85
B	44' x 72'	13.4 x 21.9	3462	1055.2	18	5.5	300	140	100
C	78' x 80'	23.7 x 24.4	6177	1882.7	18	5.5	578	290	240
AB	72' x 88'	21.9 x 26.8	6667	2032.1	18	5.5	552	280	240
ABC	152' x 164'	46.3 x 49.9	12844	3914.9	18	5.5	1166	580	372
AB with Prefunction	72' x 116'	21.9 x 35.3	11311	3447.6	18	5.5	667	330	220
ABC with Prefunction	116' x 152'	35.3 x 46.3	17488	5330.3	18	5.5	1166	580	372
Meeting Rooms									
D	13' x 39'	3.9 x 11.9	566	172.6	10'5"	3.2	36	20	13
E	13' x 36'	3.9 x 10.9	532	162.2	10'5"	3.2	32	20	12
F	31' x 76'	9.4 x 23.2	2163	659.3	10'5"	3.2	178	80	55
West Salon									
G	42' x 82'	12.8 x 24.9	3748	1142.4	18	5.5	304	160	115
H	44' x 82'	13.4 x 24.9	3767	1148.2	18	5.5	304	160	115
I	54' x 63'	16.4 x 19.2	5770	1758.7	18	5.5	442	260	150
GH	82' x 86'	24.9 x 26.2	7515	2290.1	18	5.5	612	300	234
GI	96 x 86	29.3 x 24.9	7515	2290.1	18	5.5	840	480	342
GHI	86' x 136'	26.2 x 41.5	13285	4049.2	18	5.5	932	480	360
GH with Prefunction	82' x 111'	24.9 x 33.8	10282	3134.1	18	5.5	1240	380	264
GHI with Prefunction	111' x 136'	33.8 x 41.5	16052	4892.7	18	5.5	1605	803	642

* Theater capacities based on chairs set 36" front edge to front edge.

** Banquet capacities based on 10 chairs per 6' round table set on 11' centers.

*** Classroom capacities based on 3 chairs per 8' x 18" table and 2 chairs per 6' x 18" table.



East & West Salons

SQUARE FEET

40,000

CEILING HEIGHT

10 - 18 feet

EAST FREIGHT ACCESS

2 service elevators located on east side for access to Halls D and E loading docks above

WEST FREIGHT ACCESS

1 service elevator located on the west side for access to Halls A, B and C loading docks below

FLOOR LOAD CAPACITY

100 lbs. per square foot

FLOOR

Carpeted

LIGHTING

Dimmable fluorescent with bi-level switching and dimmable incandescent

UTILITIES AND SERVICES

Electrical

20 amp/120 volt on walls at 15 foot centers

100 amp/208 volt on walls at 30 foot centers

Wall: 100 amp/208 110 volt 3 phase

400 amp/208 110 volt 3 phase

Floor: 30A 3 phase

Telephone/Data

Voice and data outlets; single mode and multimode fiber connections

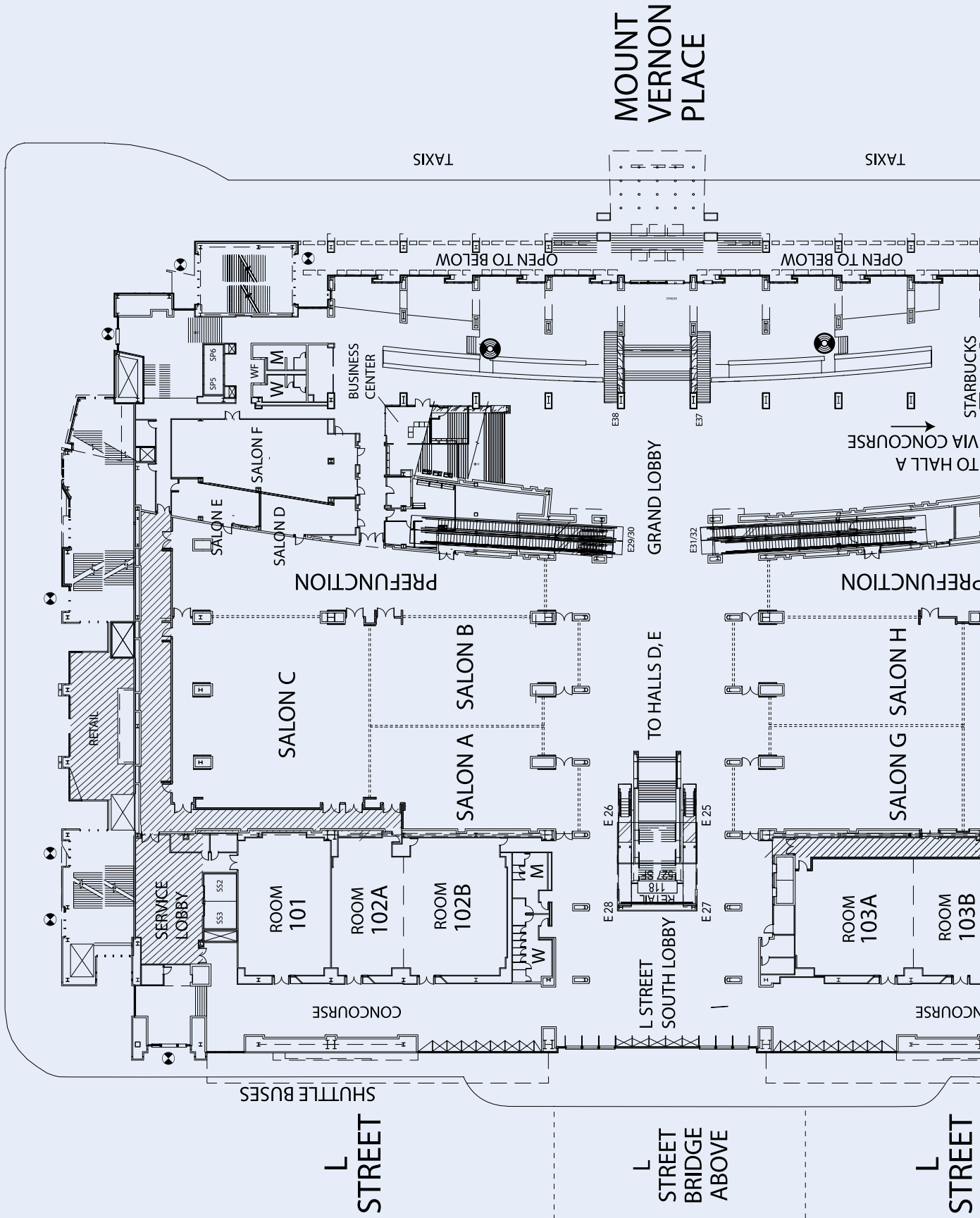
Audio and Video

XRL mic and line connectors

Audio inputs

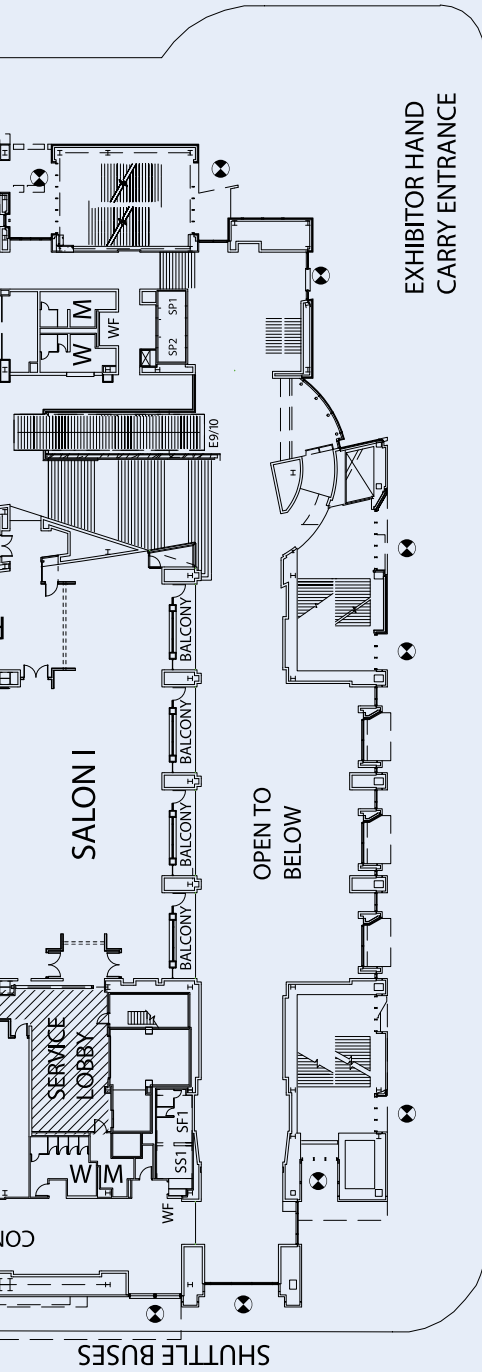
Floorplan

7TH STREET



BUILDING LEGEND

<ul style="list-style-type: none"> ■ - COLUMNS W - WOMEN'S RESTROOM M - MEN'S RESTROOM E - ESCALATOR ☐ - CONCESSIONS ▨ - MECHANICAL AREAS ⊗ - EXIT ⊙ - WIFI 	<ul style="list-style-type: none"> T - TELEPHONES S - STROBES F - FIRE EXTINGUISHER CABINET A - ART WF - WATER FOUNTAIN TH - THERMOSTAT ATM - AUTOMATIC TELLER MACHINE AED - AUTOMATIC EXTERNAL DEFIBRILLATORS 	<p>ELEVATOR LEGEND</p> <p>BUILDING TYPE</p> <ul style="list-style-type: none"> S - SOUTH M - MIDDLE N - NORTH <p>ELEVATOR TYPE</p> <ul style="list-style-type: none"> F - FREIGHT ELEVATOR P - PASSENGER ELEVATOR S - SERVICE ELEVATOR <p>EXAMPLE: MP16=MIDDLE PASSENGER ELEVATOR #16</p>	<p>LINETYPE LEGEND</p> <ul style="list-style-type: none"> ----- ROLL-UP DOORS ----- AIRWALLS LOW CEILING ----- SKYFOLD AIRWALLS
-------------------------------------------------------------------------------------------------------------------------------------------------------------------------------------------------------------------------------------------	----------------------------------------------------------------------------------------------------------------------------------------------------------------------------------------------------------------------------------------------------------------------------------------------	----------------------------------------------------------------------------------------------------------------------------------------------------------------------------------------------------------------------------------------------------------------------------------------------------------------------------------------------------------------------------------	----------------------------------------------------------------------------------------------------------------------------------------------------------------------------------------



9TH STREET



Level Two

(Level 2)

Exhibit Halls D & E
Meeting Rooms 201-210
East and West Overlook

Halls D & E

HALL D

111,000 square feet

HALL E

119,000 square feet

TOTAL CONTIGUOUS SQUARE FEET

230,000

1,000 booths (10 feet x 10 feet)

COLUMNS

180-foot clear span between “east to west” columns

90-foot centers between “north to south” columns

CEILING HEIGHT

Ranges from 30 to 50 feet

FREIGHT DOCKS

Hall D: 10 covered docks

Hall E: 10 covered docks

FREIGHT ACCESS

Hall D:

1 drive-in (16 feet wide x 15 feet high),

2 overhead (16 feet wide x 15 feet high)

Hall E:

1 drive-in (20 feet wide x 15 feet high),

1 overhead (20 feet wide x 15 feet high)

FLOOR LOAD CAPACITY

350 lbs. per square foot

LIGHTING

Hi Bay fluorescent and dimmable incandescent

UTILITIES AND SERVICES

Floor boxes on 30 foot centers contain:

Electrical

120/208 volt, single phase and 3 phase

Telephone/Data

Single mode and multimode fiber connections

Audio and Video at Multiple Boxes

XLR mic and line connectors

RJ45 audio inputs

Plumbing

3-inch drain

On Columns:

Electrical

120/208 volt, single phase and 3 phase

Audio and Video at Multiple Columns

Paging, video and multipin audio connectors

Plumbing

1-inch water line; 1-inch compressed air pipe;
can be routed to floor boxes via conduit in floor

Overhead

120/208 volt, single phase and 3 phase

FOOD SERVICE

Permanent concession stand inside Hall D, food court outside Hall D, café overlooking Hall E

RESTROOMS

4 sets of men’s and women’s rooms, (2 sets in Hall D, 2 sets in Hall E)

SHOW OFFICES

Hall D: 140 square feet (south wall of Hall D)

Hall E: 1,400 square feet (overlooks north side of Hall E)

FIRST AID

Permanent room; access from inside Hall D and loading dock

Meeting Rooms 201-210 East and West Overlook

Electrical

100 amp/208 volt 3 phase; 400 amp/208 volt 3 phase

Telephone/Data

Voice and data connections; single mode and multimode fiber connections

Audio and Video

XLR mic and line connectors

Audio inputs

Lighting

Fluorescent with bi-level switching and dimmable incandescent

RESTROOMS

4 sets of men’s and women’s rooms

Information

Capacities and Dimensions: Meeting Rooms 201-210

Room #	Usable Dimensions		Usable SQ FT	Usable SQ Meters	Ceiling Height		Theater*	Banquet**	Classroom***
	FT, length x width	M, length x width			FT	M			
201	86'11" x 45'	26.5m x 13.7m	4000	371.6	17'4"	5.3	440	180	168
202AB	78'9" x 99'4"	24m x 30.3m	7900	752.5	16'9"	5.1	912	400	384
202A	78'9" x 52'3"	24m x 15.9m	4100	390.2	16'9"	5.1	538	240	195
202B	78'9" x 48'	24m x 14.6m	3800	371.6	16'9"	5.1	484	180	169
203AB	57'11" x 26'3"	17.6m x 8m	1330	139.4	13'6"	4.1	120	80	60
203A	28'9" x 23'	8.8m x 7m	665	74.0	13'6"	4.1	60	40	24
203B	28'9" x 23'	8.8m x 7m	665	69.7	13'6"	4.1	54	40	24
204ABC	97'7" x 41'11"	29.7m x 12.8m	4200	390.2	16'9"	5.1	450	210	165
204AB	59'5" x 41'11"	18.1m x 12.8m	2600	241.5	16'9"	5.1	252	120	88
204BC	68' x 41'11"	20.7m x 12.8m	2900	269.4	16'9"	5.1	306	150	110
204A	42'1" x 29'2"	12.8m x 8.8m	1300	120.8	16'9"	5.1	99	60	42
204B	42'1" x 30'	12.8m x 9.1m	1300	120.8	16'9"	5.1	121	60	42
204C	42'2" x 38'2"	12.8m x 11.6m	1600	148.6	16'9"	5.1	160	90	56
205	26'6" x 20'4"	8.1m x 6.2m	600	55.7	16'	4.9	42	30	20
206	85' x 45'	25.9m x 13.7m	4000	371.6	17'4"	5.3	440	180	168
207AB	78'9" x 99'4"	24m x 30.3m	8100	752.5	16'9"	5.1	912	400	384
207A	78'9" x 52'3"	24m x 15.9m	4200	390.2	16'9"	5.1	538	240	195
207B	78'9" x 48'	24m x 14.6m	4000	371.6	16'9"	5.1	484	180	169
208AB	57'11" x 23'	17.6m x 7m	1500	139.4	13'6"	4.1	120	80	60
208A	28'9" x 23'	8.8m x 7m	800	74.3	13'6"	4.1	60	40	24
208B	28'9" x 23'	8.8m x 7m	750	69.7	13'6"	4.1	54	40	24
209ABC	88'2" x 42'1"	26.9m x 12.8m	3800	353.0	16'9"	5.1	406	180	154
209AB	59'2" x 42'1"	18m x 12.8m	2600	241.5	16'9"	5.1	252	120	88
209BC	58'11" x 42'1"	17.9m x 12.8m	2500	232.3	16'9"	5.1	250	120	88
209A	42'1" x 29'2"	12.8m x 8.8m	1300	120.8	16'9"	5.1	110	60	42
209B	42'1" x 30'	12.8m x 9.1m	1300	120.8	16'9"	5.1	110	60	42
209C	42'2" x 28'9"	12.8m x 8.8m	1200	111.5	16'9"	5.1	110	60	42
210	24' x 21'10"	7.3m x 6.7m	550	51.9	16'	4.9	40	30	16
East Overlook	39' x 32'	11.8 x 9.7	1248	114.5	18	5.5	112	40	45
West Overlook	38'3" x 31'	11.66 x 9.45	1063	98.7	18	5.5	63	30	20

* Theater capacities based on chairs set 36" front edge to front edge.

** Banquet capacities based on 10 chairs per 6' round table set on 11' centers.

*** Classroom capacities based on 3 chairs per 8' x 18" table and 2 chairs per 6' x 18" table.

Capacities and Dimensions: Halls D and E

Room #	Usable Dimensions		Usable SQ FT	Usable SQ Meters	Ceiling Height	
	FT, length x width	M, length x width			FT	M
Hall DE	225'11" x 781'8"	68.8m x 238.2m	230,000	21,367.7	40'-52'9"	12.2-16.1
Hall D	225'11" x 449'3"	68.8m x 136.9m	111,000	10,312.2	40'-52'9"	12.2-16.1
Hall E	225'11" x 332'11"	68.8m x 101.4m	119,000	11,055.4	40'-52'9"	12.2-16.1

Subtotals based on maximum room configuration capacity



Level Two (Level 2)

Exhibit Halls D & E Meeting Rooms 201-210 East and West Overlook

Halls D & E

HALL D

111,000 square feet

HALL E

119,000 square feet

TOTAL CONTIGUOUS SQUARE FEET

230,000

1,000 booths (10 feet x 10 feet)

COLUMNS

180-foot clear span between “east to west” columns

90-foot centers between “north to south” columns

CEILING HEIGHT

Ranges from 30 to 50 feet

FREIGHT DOCKS

Hall D: 10 covered docks

Hall E: 10 covered docks

FREIGHT ACCESS

Hall D:

1 drive-in (16 feet wide x 15 feet high),

2 overhead (16 feet wide x 15 feet high)

Hall E:

1 drive-in (20 feet wide x 15 feet high),

1 overhead (20 feet wide x 15 feet high)

FLOOR LOAD CAPACITY

350 lbs. per square foot

LIGHTING

Hi Bay fluorescent and dimmable incandescent

UTILITIES AND SERVICES

Floor boxes on 30 foot centers contain:

Electrical

120/208 volt, single phase and 3 phase

Telephone/Data

Single mode and multimode fiber connections

Audio and Video at Multiple Boxes

XLR mic and line connectors

RJ45 audio inputs

Plumbing

3-inch drain

On Columns:

Electrical

120/208 volt, single phase and 3 phase

Audio and Video at Multiple Columns

Paging, video and multipin audio connectors

Plumbing

1-inch water line; 1-inch compressed air pipe;
can be routed to floor boxes via conduit in floor

Overhead

120/208 volt, single phase and 3 phase

FOOD SERVICE

Permanent concession stand inside Hall D, food court outside Hall D, café overlooking Hall E

RESTROOMS

4 sets of men’s and women’s rooms, (2 sets in Hall D, 2 sets in Hall E)

SHOW OFFICES

Hall D: 140 square feet (south wall of Hall D)

Hall E: 1,400 square feet (overlooks north side of Hall E)

FIRST AID

Permanent room; access from inside Hall D and loading dock

Meeting Rooms 201-210 East and West Overlook

Electrical

100 amp/208 volt 3 phase; 400 amp/208 volt 3 phase

Telephone/Data

Voice and data connections; single mode and multimode fiber connections

Audio and Video

XLR mic and line connectors

Audio inputs

Lighting

Fluorescent with bi-level switching and dimmable incandescent

RESTROOMS

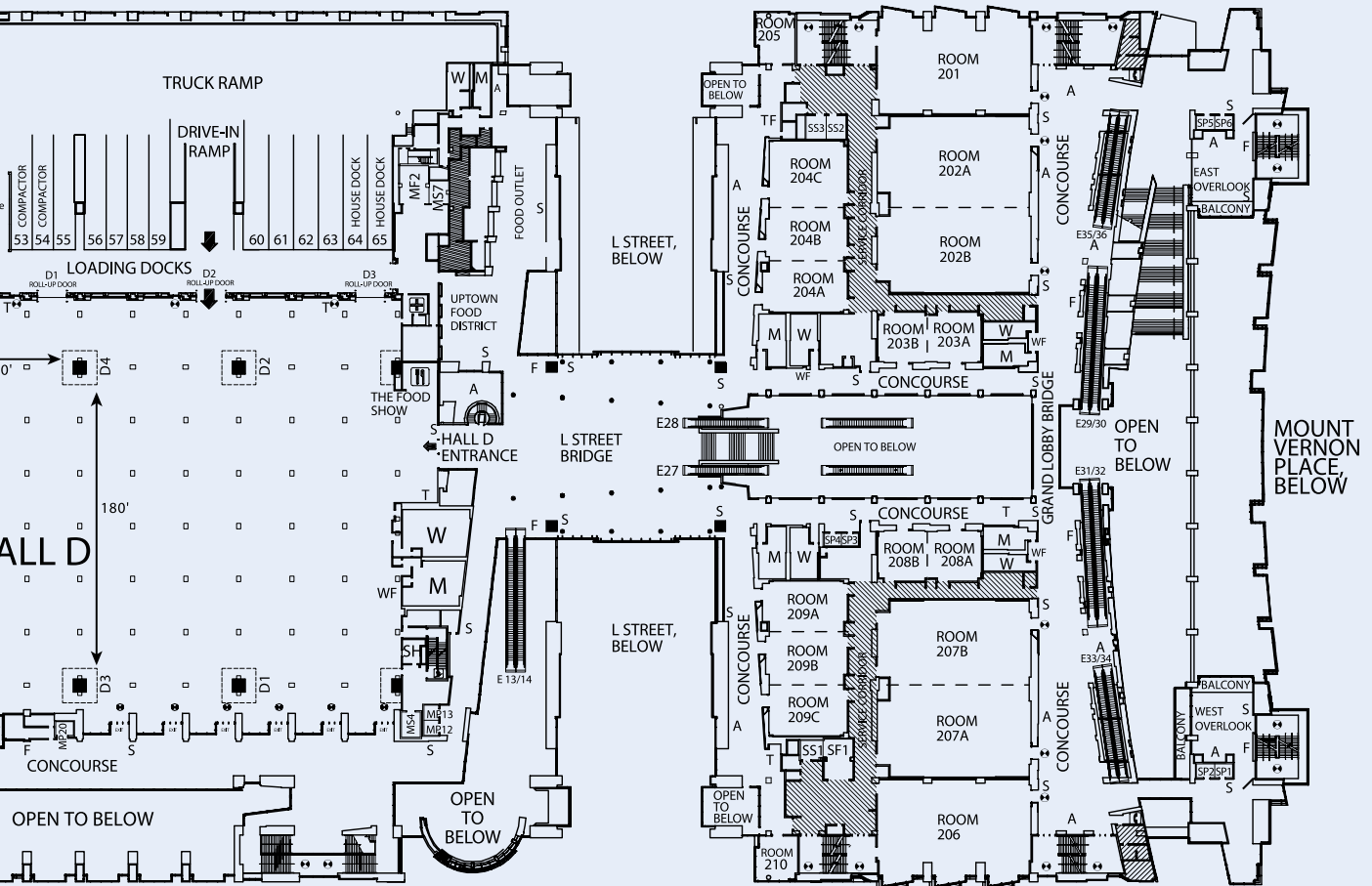
4 sets of men’s and women’s rooms

BUILDING LEGEND

<ul style="list-style-type: none"> ■ - COLUMNS W - WOMEN'S RESTROOM M - MEN'S RESTROOM E - ESCALATOR ☐ - CONCESSIONS ▨ - MECHANICAL AREAS ⊙ - EXIT ⊙ - WiFi 	<ul style="list-style-type: none"> T - TELEPHONES S - STROBES F - FIRE EXTINGUISHER CABINET A - ART WF - WATER FOUNTAIN TH - THERMOSTAT AED - AUTOMATIC EXTERNAL DEFIBRILLATORS 	<p>ELEVATOR LEGEND</p> <p>BUILDING TYPE</p> <ul style="list-style-type: none"> S - SOUTH M - MIDDLE N - NORTH <p>ELEVATOR TYPE</p> <ul style="list-style-type: none"> F - FREIGHT ELEVATOR P - PASSENGER ELEVATOR S - SERVICE ELEVATOR <p>EXAMPLE: MP16=MIDDLE PASSENGER ELEVATOR #16</p>	<p>LINETYPE LEGEND</p> <ul style="list-style-type: none"> ----- ROLL-UP DOORS ----- AIRWALLS LOW CEILING
-------------------------------------------------------------------------------------------------------------------------------------------------------------------------------------------------------------------------------------------	------------------------------------------------------------------------------------------------------------------------------------------------------------------------------------------------------------------------------------------------------	----------------------------------------------------------------------------------------------------------------------------------------------------------------------------------------------------------------------------------------------------------------------------------------------------------------------------------------------------------------------------------	--------------------------------------------------------------------------------------------------------------------------------------------------------



7TH STREET, BELOW



9TH STREET, BELOW



Level Three

(Level 3)

Ballroom

Meeting Rooms 301-306

Kitchen

Ballrooms

BALLROOM A

19,000 square feet (16,400 square feet plus 2,600-square-foot balcony)

BALLROOM B

14,000 square feet

BALLROOM C

19,000 square feet (16,400 square feet plus 2,600-square-foot balcony)

TOTAL USABLE SQUARE FEET

52,000

CEILING HEIGHT

40 to 48 feet high; 10 feet under balconies

South PRE-FUNCTION

30,000 square feet with natural light

FLOOR LOAD CAPACITY

100 lbs. per square foot

FREIGHT ACCESS

2 service elevators

LIGHTING

Hi Bay fluorescent and dimmable incandescent; multiple preset options

UTILITIES AND SERVICES

Electrical

100 amp/208 volt 3 phase; 200 amp/208 volt 3 phase; 400 amp/208 volt 3 phase; 60 amp/208 volt 3 phase overhead

Telephone/Data

Voice and data connections; single mode and multimode fiber connections

Audio and Video

XLR mic and line connectors; paging, video, multipin audio connectors on walls and in floor; A/V Mezzanine across southside of ballroom

DRESSING ROOMS

A. 48' x 20'; restrooms with no showers

B. 20' x 25'; restrooms with no showers

RESTROOMS

2 sets of men's and women's rooms

KITCHEN

20,000-square-foot kitchen adjacent to the ballroom

Meeting Rooms 301-306

LIGHTING

Fluorescent with bi-level switching and dimmable incandescent

UTILITIES AND SERVICES

Electrical

100 amp/208 volt 3 phase

Telephone/Data

Voice and data connections

Audio and Video

XLR mic and line connectors

Multipin audio connectors

Information

Capacities and Dimensions: Meeting Rooms 301–306

Room #	Usable Dimensions	Usable Dimensions	Usable SQ FT	Usable SQ Meters	Ceiling Height		Theater*	Banquet**	Classroom***
	FT, length x width	M, length x width			FT	M			
301	25' x 28'10"	7.6m x 8.8m	775	71.9	10'	3	40	40	30
302	25' x 28'10"	7.6m x 8.8m	775	71.9	10'	3	40	40	30
303	25' x 28'10"	7.6m x 8.8m	775	71.9	10'	3	40	40	30
304	25' x 28'10"	7.6m x 8.8m	775	71.9	10'	3	40	40	30
305	25' x 28'10"	7.6m x 8.8m	775	71.9	10'	3	40	40	30
306	25' x 28'10"	7.6m x 8.8m	775	71.9	10'	3	40	40	30

* Theater capacities based on chairs set 36" front edge to front edge.

** Banquet capacities based on 10 chairs per 6' round table set on 11' centers.

*** Classroom capacities based on 3 chairs per 8' x 18" table and 2 chairs per 6' x 18" table.

Capacities and Dimensions: Ballroom ABC

Room #	Usable Dimensions	Usable Dimensions	Usable SQ FT	Usable SQ Meters	Ceiling Height		Theater*	Banquet**	Classroom***
	FT, length x width	M, length x width			FT	M			
Ballroom ABC	267'11" x 140'2"	81.7m x 42.1m	52000	4830.9	40'-48'	12.2-14.6	4600	2780	2460
Ballroom AB	186'9" x 140'2"	56.9m x 42.1m	33000	3065.8	40'-48'	12.2-14.6	2800	1300	1512
Ballroom BC	186'9" x 140'2"	56.9m x 42.1m	33000	3065.8	40'-48'	12.2-14.6	2800	1300	1512
Ballroom A	140'2" x 97'2"	42.1m x 29.6m	19000	1765.2	40'-48'	12.2-14.6	1633	840	800
Ballroom B	140'2" x 89'6"	42.1m x 27.2m	14000	1300.6	40'-48'	12.2-14.6	1400	780	700
Ballroom C	140'2" x 97'2"	42.1m x 29.6m	19000	1765.2	40'-48'	12.2-14.6	1633	840	800

* Theater capacities based on chairs set 36" from front edge to front edge.

** Banquet capacities based on 10 chairs per 6' round table.

*** Classroom capacities based on 4 chairs per 8' x 18" table and 3 chairs per 6' x 18" table.

Fire Dept. Columns, Water, Compressed Air & Natural Gas

Hall D					Hall E				
Column #	FDC	Water	Comp. Air	Nat. Gas	Column #	FDC	Water	Comp. Air	Nat. Gas
West entrance wall		X	X		E-1		X	X	
East entrance wall		X	X		E-2	X	X	X	
D-1	X	X	X		E-3		X	X	
D-2		X	X		E-4	X	X	X	
D-3	X	X	X	X	E-5		X	X	X
D-4	X	X	X	X	E-6		X	X	X
D-5		X	X		E-7		X	X	
D-6	X	X	X		E-8		X	X	
D-7		X	X		E-9	X	X	X	
D-8	X	X	X						



Level Three

(Level 3)

Ballroom

Meeting Rooms 301-306

Kitchen

Ballroom

BALLROOM A

19,000 square feet (16,400 square feet plus 2,600-square-foot balcony)

BALLROOM B

14,000 square feet

BALLROOM C

19,000 square feet (16,400 square feet plus 2,600-square-foot balcony)

TOTAL USABLE SQUARE FEET

52,000

CEILING HEIGHT

40 to 48 feet high; 10 feet under balconies

South PRE-FUNCTION

30,000 square feet with natural light

FLOOR LOAD CAPACITY

100 lbs. per square foot

FREIGHT ACCESS

2 service elevators

LIGHTING

Hi Bay fluorescent and dimmable incandescent; multiple preset options

UTILITIES AND SERVICES

Electrical

100 amp/208 volt 3 phase; 200 amp/208 volt 3 phase; 400 amp/208 volt 3 phase; 60 amp/208 volt 3 phase overhead

Telephone/Data

Voice and data connections; single mode and multimode fiber connections

Audio and Video

XLR mic and line connectors; paging, video, multipin audio connectors on walls and in floor; A/V Mezzanine across southside of ballroom

DRESSING ROOMS

A. 48' x 20'; restrooms with no showers
B. 20' x 25'; restrooms with no showers

RESTROOMS

2 sets of men's and women's rooms

KITCHEN

20,000-square-foot kitchen adjacent to the ballroom

Meeting Rooms 301-306

LIGHTING

Fluorescent with bi-level switching and dimmable incandescent

UTILITIES AND SERVICES

Electrical

100 amp/208 volt 3 phase

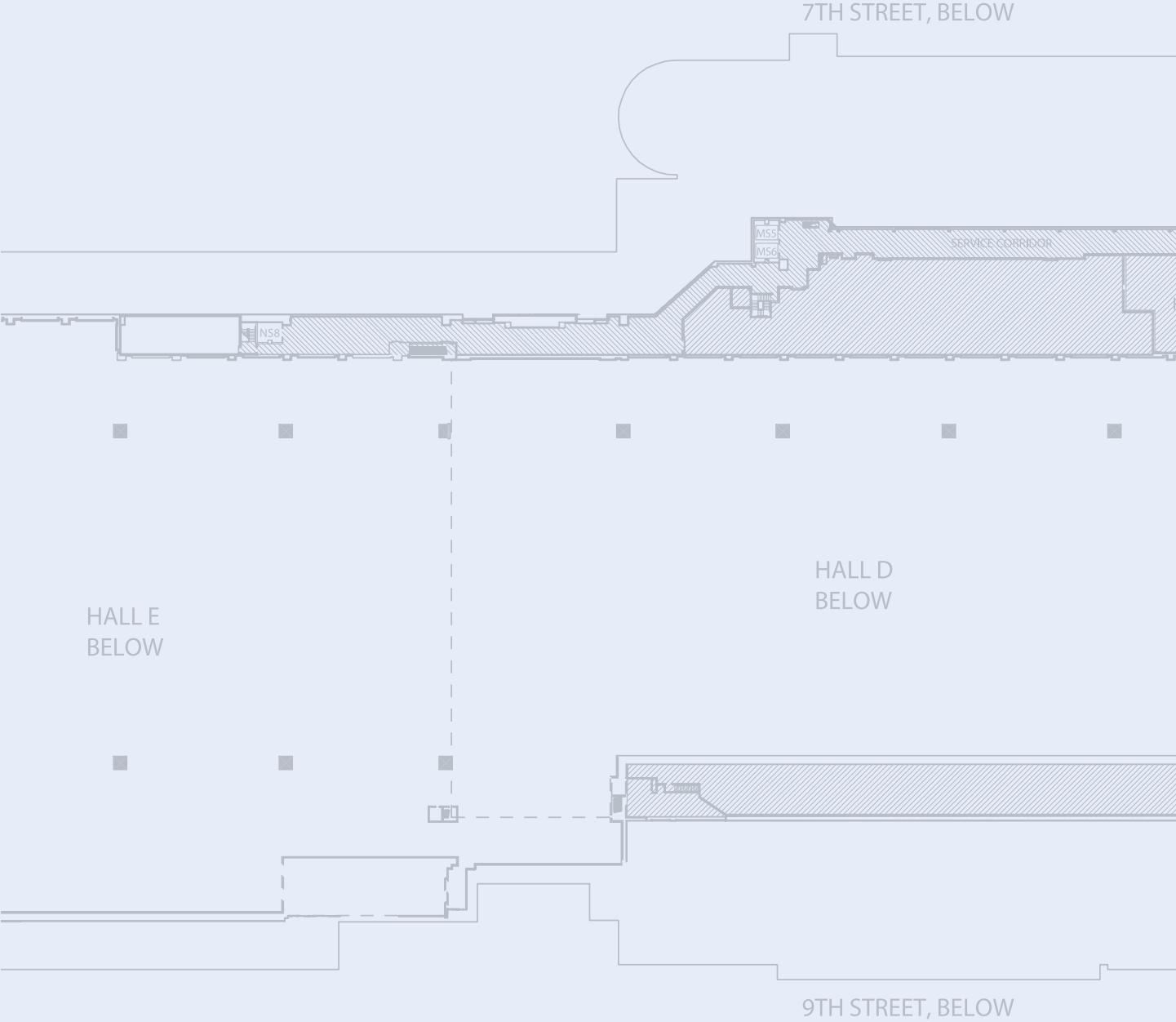
Telephone/Data

Voice and data connections

Audio and Video

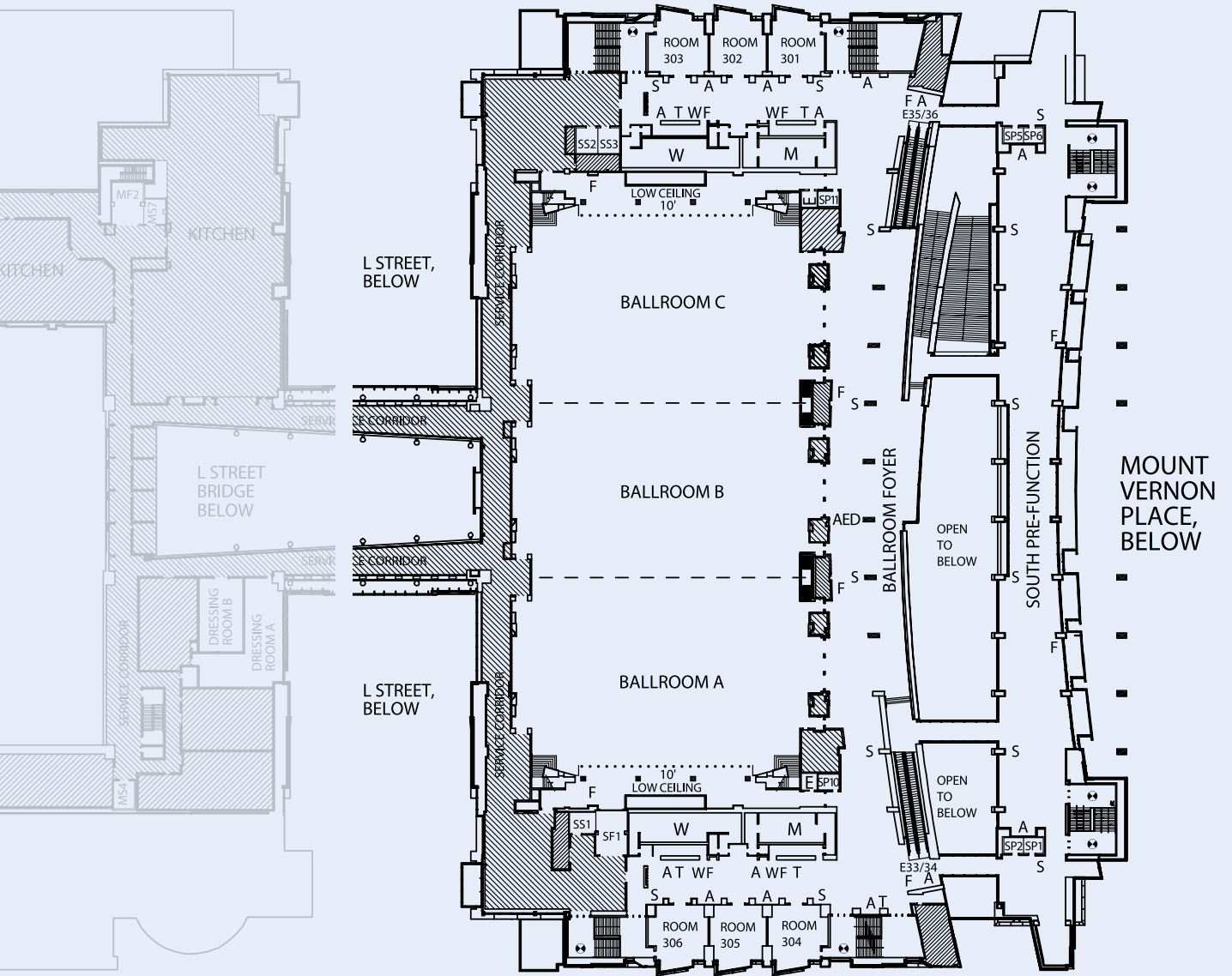
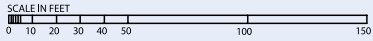
XLR mic and line connectors
Multipin audio connectors

Floorplan



BUILDING LEGEND

<ul style="list-style-type: none"> ■ - COLUMNS W - WOMEN'S RESTROOM M - MEN'S RESTROOM E - ESCALATOR ☒ - CONCESSIONS ▨ - MECHANICAL AREAS ⊙ - EXIT 	<ul style="list-style-type: none"> T - TELEPHONES S - STROBES F - FIRE EXTINGUISHER CABINET A - ART WF - WATER FOUNTAIN TH - THERMOSTAT AED - AUTOMATIC EXTERNAL DEFIBRILLATORS 	<p>ELEVATOR LEGEND</p> <p>BUILDING TYPE</p> <ul style="list-style-type: none"> S - SOUTH M - MIDDLE N - NORTH <p>ELEVATOR TYPE</p> <ul style="list-style-type: none"> F - FREIGHT ELEVATOR P - PASSENGER ELEVATOR S - SERVICE ELEVATOR <p>EXAMPLE: MP16=MIDDLE PASSENGER ELEVATOR #16</p>	<p>LINETYPE LEGEND</p> <ul style="list-style-type: none"> ----- ROLL-UP DOORS ----- AIRWALLS LOW CEILING
-------------------------------------------------------------------------------------------------------------------------------------------------------------------------------------------------------------------------	------------------------------------------------------------------------------------------------------------------------------------------------------------------------------------------------------------------------------------------------------	--------------------------------------------------------------------------------------------------------------------------------------------------------------------------------------------------------------------------------------------------------------------------------------------------------------------------------------------------------------------	--------------------------------------------------------------------------------------------------------------------------------------------------------



WHAT'S REQUIRED

REQUIRED FOR ALL EVENTS

INSURANCE

You are required to maintain liability insurance for bodily injury and property damage for the duration of occupancy (i.e., move-in through move-out). The insurance policy must include the Washington Convention and Sports Authority t/a Events DC, its Board of Directors, officers and employees, and the District of Columbia as additional insureds. Events DC generally requires insurance with a per occurrence limit of \$1 million and an aggregate limit of \$2 million; however, higher limits may be required depending on the event. A certificate of insurance reflecting Events DC's requirements must be received by Events DC prior to move-in. For certain events, Events DC may be able to acquire liability insurance for you through its broker at prevailing rates. Please contact your sales representative for details.

REQUIRED FOR ALL EVENTS WITH MORE THAN 500 PEOPLE

(Note: All requests are based on event requirements and subject to final approval by Walter E. Washington Convention Center security staff.)

MEDICAL

As the event organizer, you are responsible for the medical needs of event attendees. Events DC therefore requires professional and trained medical personnel to be on duty for the duration of the event. On show days, medical personnel must be on duty at least 30 minutes before the scheduled event start time and until 30 minutes after the event concludes. A list of approved medical services providers appears on page 49.

SECURITY

Licensed and bonded security personnel must be present for the duration of occupancy. Security services providers may be selected from the list on page 49 or you may choose to engage officers from the Metropolitan Police Department (MPD). Except for MPD officers, armed security personnel are not permitted in the Convention Center without Events DC's permission. MPD officers must be present whenever cash is to be handled during your event.

SECURITY AND MEDICAL PROVIDERS

Medical Services Providers

George Washington University Medical Center — Dept. of Emergency Medicine

2150 Pennsylvania Avenue NW, Room 2B-417
Washington, DC 20073
Tel: 202-741-2905
Fax: 202-553-8523

Medical Services Available: Emergency Medical Technicians, Registered Nurses, Emergency Physicians, Complete Medical Supplies, Basic and Advanced Life Support, Ambulance Services

Farragut Medical and Travel Care (Walk-in Clinic)

815 Connecticut Avenue, N.W.
Washington, DC 20006
Tel: 202-775-8500
Fax: 202-775-2464

Provide urgent, walk-in medical care, as well as ambulatory care.

Providence Hospital

1150 Varnum Street NE
Washington, DC 20017
Wellness Institute
Tel: 202-269-7786
Tel: 202-269-7048
Fax: 202-426-7832

Medical Services Available: Emergency Medical Technicians, Licensed Practical Nurses, Registered Nurses, Physician's Assistants, Nurse Practitioners, Physicians, Complete Medical Supplies, Basic and Advanced Life Support, Ambulance Services

Security Services Providers

CES Security, Inc.

115 McHenry Avenue
Baltimore, MD 21208
Tel: 443-471-7000 Ext 231
Fax: 443-471-7017

Preeminent Protective Services

1050 17th Street NW, Suite 600
Washington, DC 20036
Tel: 202-496-1287
Fax: 202-496-1286

Simmons Security Agency

7716 Rotherham Drive
Hanover, MD 21076
Tel: 240-375-0283
Fax: 1-866-610-9606

Andrews International

8455 Colesville Road, Suite 900
Silver Spring, MD 20910
Tel: 301-588-6600
Fax: 301-588-6601
Website: www.gardaglobal.com

Security Assurance Management, Inc.

910 17th Street NW, Suite 220
Washington, DC 20006
Tel: 202-293-8011
Fax: 202-293-1095

CSI Corporation of DC

7838 Eastern Avenue, NW
Washington, DC 20012
Tel: 202-722-3300
Fax: 202-722-3301
Website: www.csicorpdc.com

ICS Security

425 8th Street S.E.
Washington D.C. 20003
Tel: 202-543- 6080

WHAT'S INCLUDED

Meeting Room & Ballroom Rental

Initial Setup of Meeting Space includes:

- One-time standard set-up in theater, classroom, conference, or banquet style.
- Skirted head table for four (4).
- Water service for speaker's platform.
- One (1) standard lectern (upon request).
- One (1) wired microphone and house sound system (upon request).
- Skirted registration table, literature table and easel outside room (upon request).
- Skirted speaker's riser in rooms set for 100 or more.

Heating, Ventilation and Air Conditioning, as appropriate, in all show management, registration, meeting and exhibit areas. Lessee receives controlled temperature during show hours at no charge. Charges will apply if additional controlled temperature is required during move-in/move-out or non-event hours.

Cleaning Services during your event; thorough daily cleaning of meeting rooms, public areas, and restrooms.

24-Hour Building Security Patrols for corridors and common areas including daily securing of meeting and exhibit space.

Exhibit Hall Rental

Cleaning Services, during your event; thorough daily cleaning of meeting rooms, public areas, and restrooms. Cleaning does not include individual booths or the vacuuming of aisle carpet. Lessee is responsible for removal of all bulk trash, crates, lumber, and packing materials prior to show opening, during and following move-out. Any costs incurred for trash not removed by the lessee will be charged to the lessee at the prevailing rate.

Heating, Ventilation and Air Conditioning, full lighting, heating and air-conditioning are provided during event hours. Fifty percent lighting will be maintained during move in/out periods, rehearsals, and similar pre/post event activities. The lessee will be assessed a utility charge for special lighting and comfort-level requirements during move-in and move-out.

Show Office, one permanent show office shall be provided for each exhibit hall licensed.

General Sessions Held in Exhibit Halls

Rental fee includes:

- One-time standard set-up for a maximum of 6,000 seats per hall. (inventory permitting)
- Main stage at single height — maximum dimensions

60'W x 40'D x 48"H (inventory permitting).
** Additional equipment such as dance floor units, production platforms, camera risers, additional seating, etc. will be charged at the prevailing rate.*

Registration and Common Areas

East and West Salons, L Street Bridge, Grand Lobby and public areas are commonly used for registration, circulation, message centers, information, ticket sales, receptions, distribution of publications, etc. Use of this space is subject to approval by Convention Center management.

Registration plans and space utilization must be approved in advance.

- 24 hour building security patrols for corridors and common areas (not to include registration areas)
- The movement of any furniture or plants may not be moved without approval of the Walter E. Washington Convention Center

ADDITIONAL COSTS

Services and Equipment Additional Fees

Show Management and Exhibitor Utilities are provided by our exclusive service partners: Hi-Tech Electric and Smart City. These services include telecommunications, internet services, electrical and plumbing services that are requested for management offices, registration, special decorations, video/lighting equipment.

Audio Visual, Video and Production Services, including presentation, video and theatrical production systems as well as recording connections for conference sessions. These services are available through WEWCC's preferred service partner, Projection. Projection offers complete broadcast, theatrical production, concert video and audio services at competitive prices.

Changeovers in leased space are charged at a flat rate. (See separate pricing document)

Stages on exhibit hall floors beyond the standard dimensions - including two-tier stages and other special configurations will be charged at prevailing rates.

Bulk Trash Removal. One complimentary trash haul is provided per event in the exhibit halls. Additional trash hauls are charged at prevailing rates. Trash hauls that consist of recyclable materials are free of charge, excluding contaminated materials.

Hazardous or Medical Waste is handled on a case-by-case basis. Special handling and disposal of hazardous or medical waste must be arranged in advance with the Center. Some materials can only be disposed by specialized licensed vendors at federally approved sites. Special waste removal is billed at local rates.

Fire Marshal approval for Floor Plans. All events containing exhibits must first submit floor plans to the Washington Convention and Sports Authority for approval. Once approval has been granted by the Authority floor plans must then be submitted to the District of Columbia Fire Department Fire Prevention Division for a fee.

Additional Charges May Include

- Full overhead lights in exhibit halls during move-in and/or move-out
- Use of Metropolitan Police Department of other security personnel
- Additional equipment and furniture beyond initial set-up (See separate pricing document)
- Tables for exhibits in meeting rooms
- Damages to the Walter E. Washington Convention Center or its equipment
- Dedicated restroom attendants
- Lost or misplaced keycards
- Water cooler service inside meeting room space

