

## Transforming Our Community's Gateway

We aim to transform the RFK Stadium Campus by converting acres of asphalt into a new gateway to the city, featuring numerous community-focused sports, recreation and cultural amenities. Our plan will improve accessibility to the site for the surrounding neighborhoods and integrate the natural beauty of the historic Anacostia River. The short-term redevelopment plan prioritizes immediate upgrades, including the following:

- **Multi-Purpose Fields** for community use for activities including outdoor soccer, lacrosse, and baseball. (Coming Spring 2019!)
- **Market Hall** to feature fresh, locally sourced, and specialty foods and products.
- **Indoor Sports & Recreation Complex** that will house a variety of activities for youth, amateur athletes, and families.
- **Pedestrian Bridges** to provide accessibility to Kingman and Heritage Islands and improve pedestrian flow and access.
- **Robert F. Kennedy Memorial** to educate visitors about RFK's legacy.

In the long-term, following the demolition of RFK Stadium, we envision three potential "anchor facility" scenarios: a 20,000-seat arena, a National Football League stadium, or an open-air, multi-purpose space.





Open up this brochure for more information!



## ARE YOU #RFKREADY?

Powered by community.  
Designed for all.

See the future at [rfkcampus.com](http://rfkcampus.com).

-  @TheEventsDC
-  @OfficialEventsDC
-  @EventsDC
-  [www.eventsdc.com](http://www.eventsdc.com)

## Message from Events DC

Our goals for the RFK Campus are to reconnect the space to the surrounding neighborhoods and draw the District's residents and visitors to a revitalized Anacostia waterfront. To accomplish this, we will transform the 190-acre site from barren asphalt into a new gateway to DC that promotes public health and recreation.

While more long-term options are considered, our redevelopment plan prioritizes more immediate, short-term upgrades to areas adjacent to RFK Stadium, bringing much-needed resources and amenities to the community.

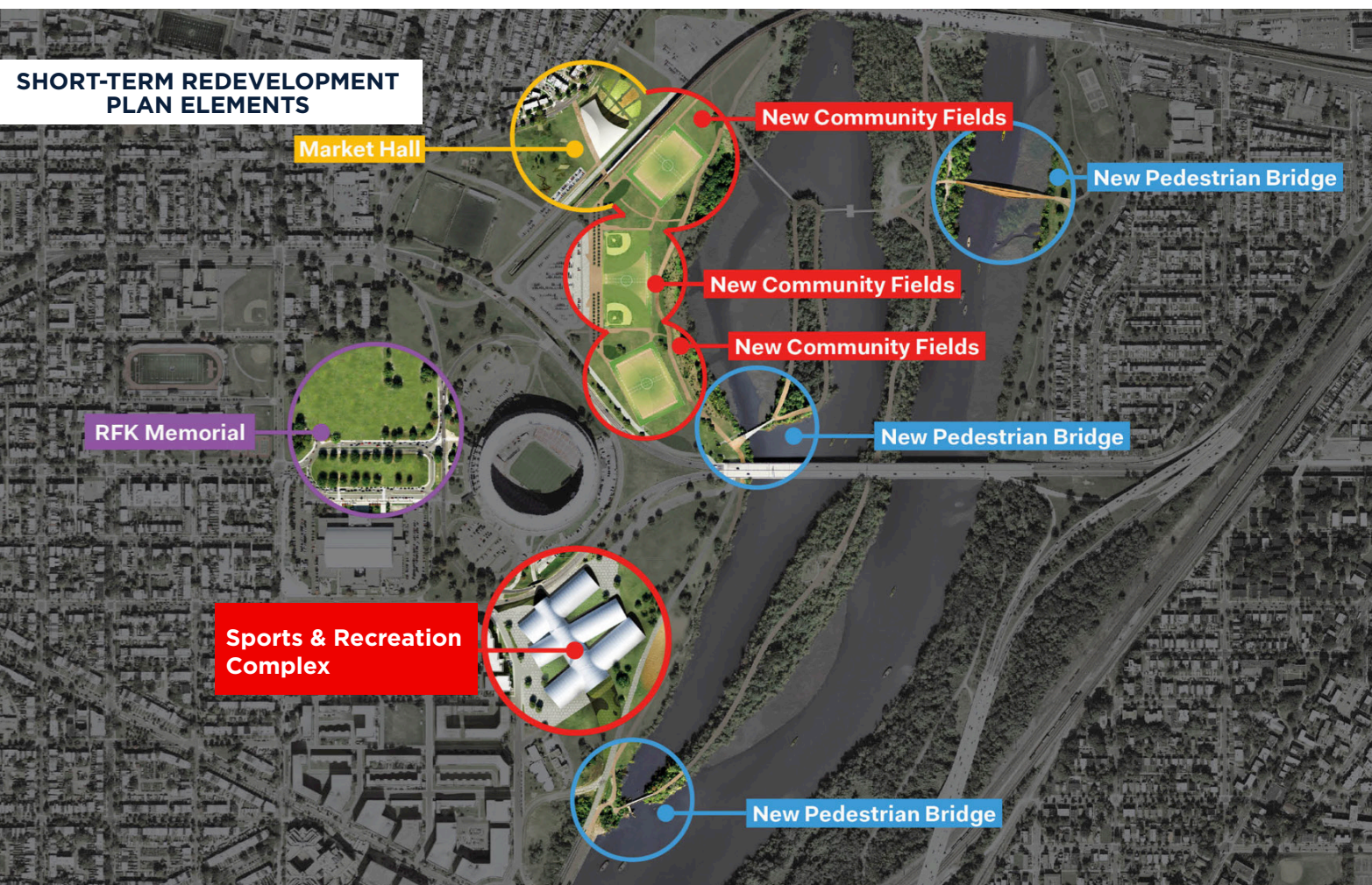
Since initially presenting our community-inspired vision for the RFK Campus in 2016, our team has been working closely with city and federal officials to address project approval requirements, while continuing our ongoing dialogue with the community. In the meantime, the RFK Campus has continued to serve as a vibrant hub of activity having hosted festivals, professional and collegiate sports teams, concerts, and other events in 2017.

We look forward to sharing additional exciting progress updates with you throughout 2018. In the meantime, if you have haven't already, please share your support for the future of the RFK Campus by signing the petition at [www.rfkcampus.com](http://www.rfkcampus.com).

On behalf of our entire Events DC staff and Board of Directors, we thank you for your continued support of this project and look forward to enjoying this space with you and your families for years to come.

**GREGORY A. O'DELL**  
President and CEO

**MAX BROWN**  
Chairman, Board of Directors





# FIVE ELEMENTS OF SHORT-TERM REDEVELOPMENT PLAN

## 1 MULTI-PURPOSE FIELDS

- Three lighted, artificial turf fields:
  - One youth soccer field with two baseball diamonds
  - Two full-sized soccer and lacrosse fields
- Adjacent to picnic area and playground
- New park/green space and pedestrian paths/trails
- Celebration pavilion and restrooms/support buildings
- Expected delivery is Spring 2019!



## 2 MARKET HALL

*Estimated square footage: 61,000*

- A permanent source of new food and dining options, including mix of staple groceries, prepared food, and specialty items
- Wellness programs to promote healthy eating and lifestyle choices
- Provides additional concessions for the fields and park area surrounding it
- Adjacent spaces include farmer's market, urban farming, and community gardens

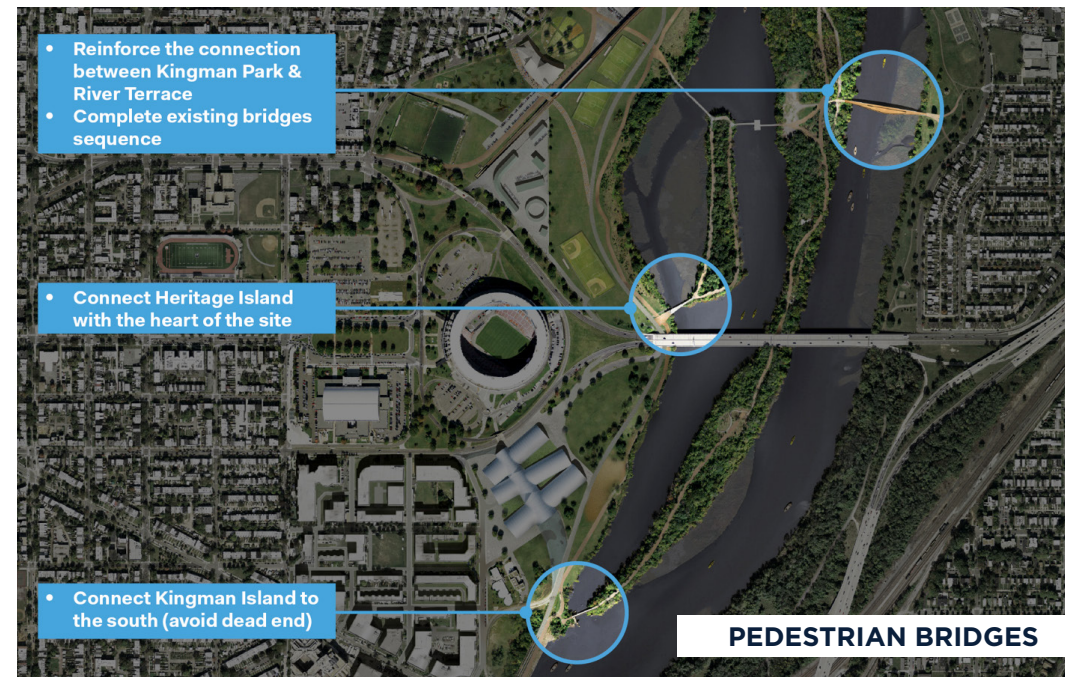


## 3 SPORTS & REC COMPLEX

*Estimated square footage: 350,000*

State-of-the-art indoor sports and activity complex, potentially including:

- Basketball Courts
- Indoor Fields
- Go-Kart Track
- Fitness Center
- Trampoline Sports
- Ice Rink
- Bowling Lanes
- Esports Center
- Batting Cages
- Climbing Walls
- And More!



## 4 PEDESTRIAN BRIDGES

*Estimated square footage: 25,000*

- Three pedestrian bridges connecting the RFK Campus to Kingman Island, Heritage Island and River Terrace
- Provides much needed access to the east side of the Anacostia River
- Bike-friendly design
- Adjacent to Environmental Center and Ecology Lab

## 5 RFK MEMORIAL

*Estimated square footage: 50,000*

- Interactive memorial dedicated to Robert F. Kennedy
- Incorporates a contemplative quality and educational components
- Engages visitors and educates the next generation about RFK's legacy, democracy, and civic engagement